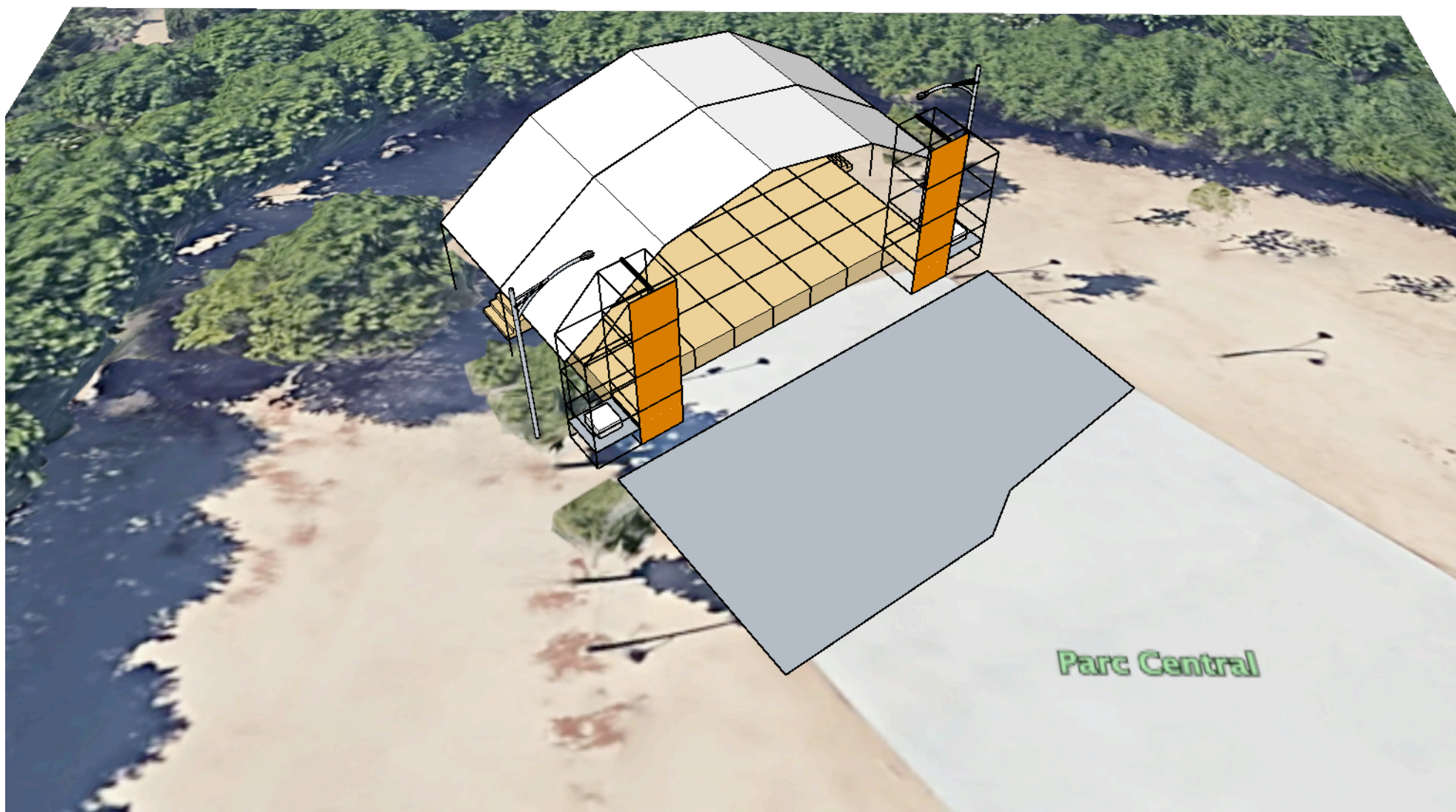
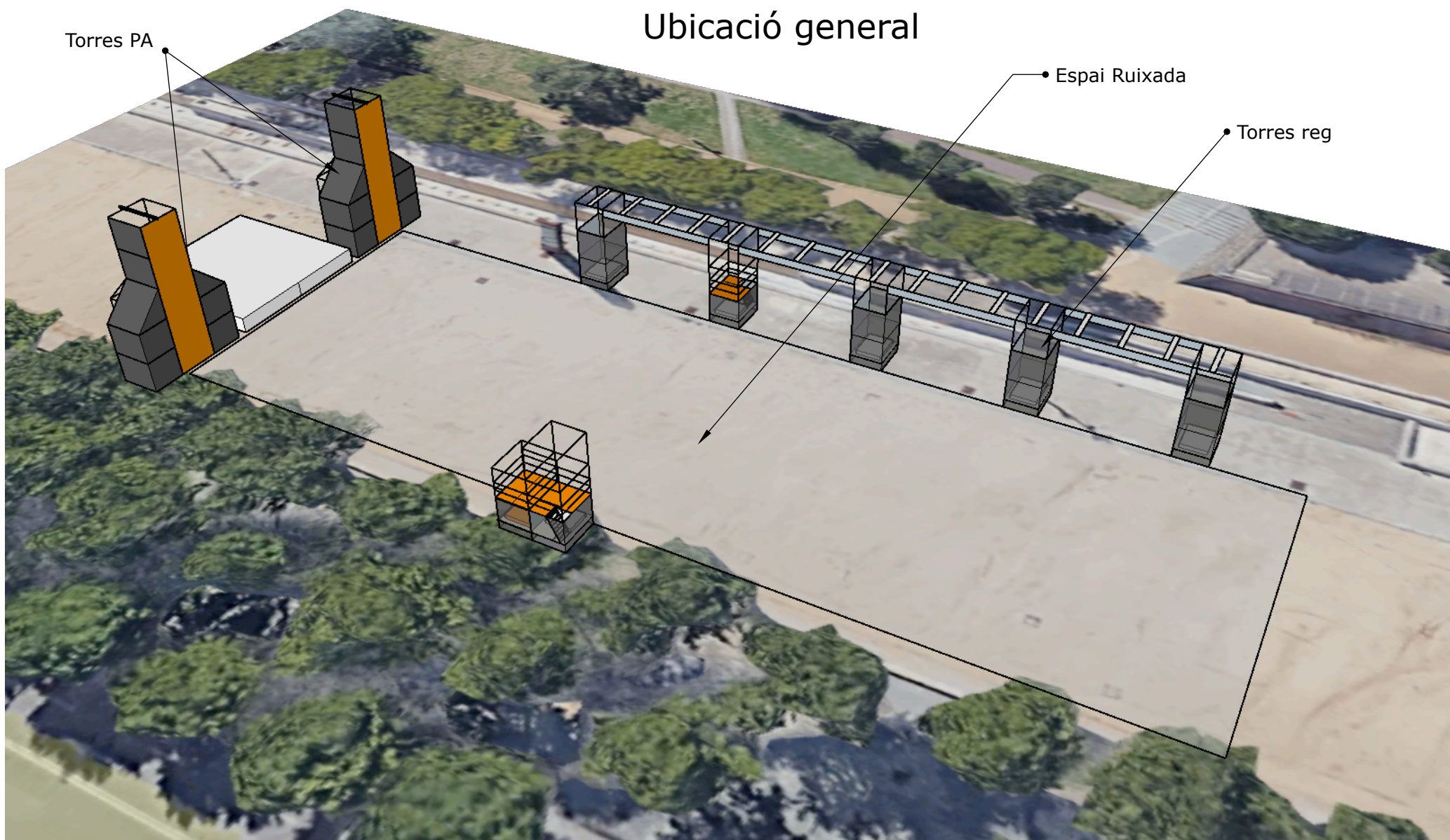


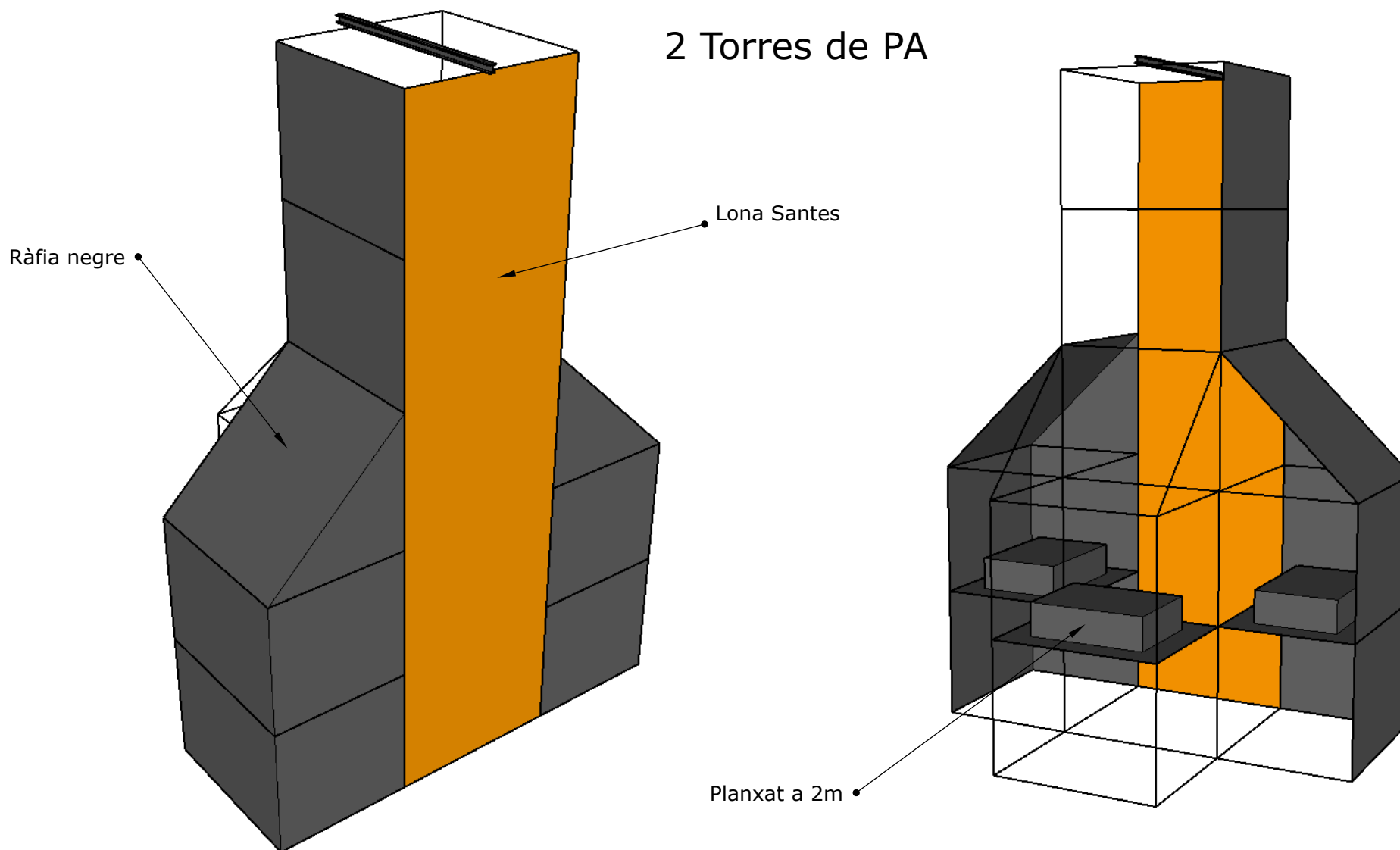
Detalls de muntatge: - cal planxar les torres de PA a nivell d'escenari per facilitar el muntatge dels equips de so

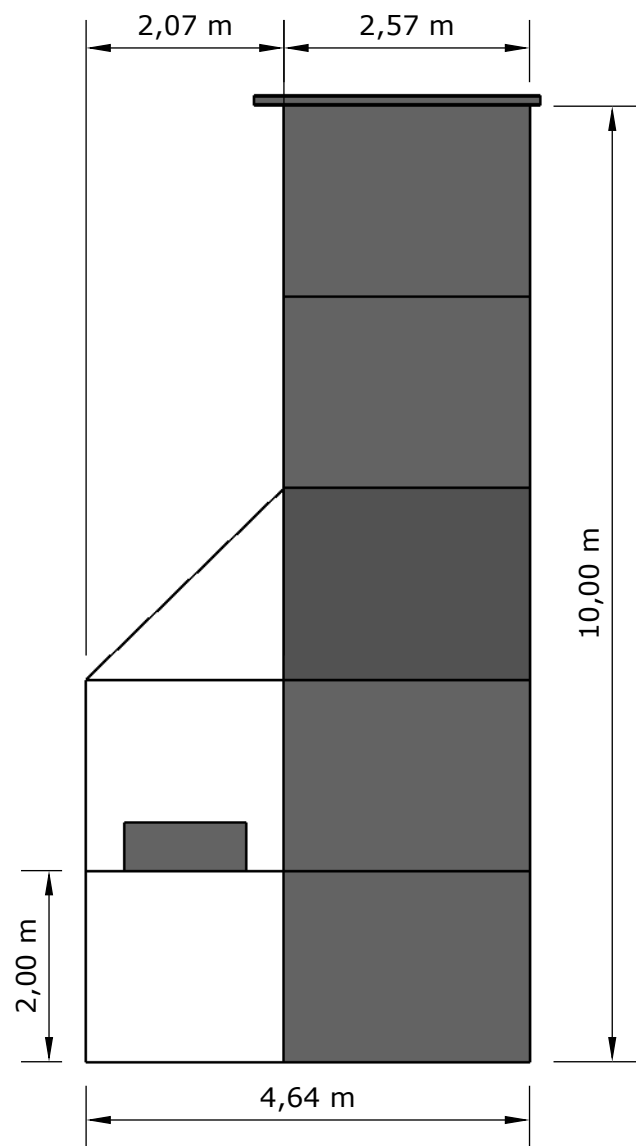


Ubicació general

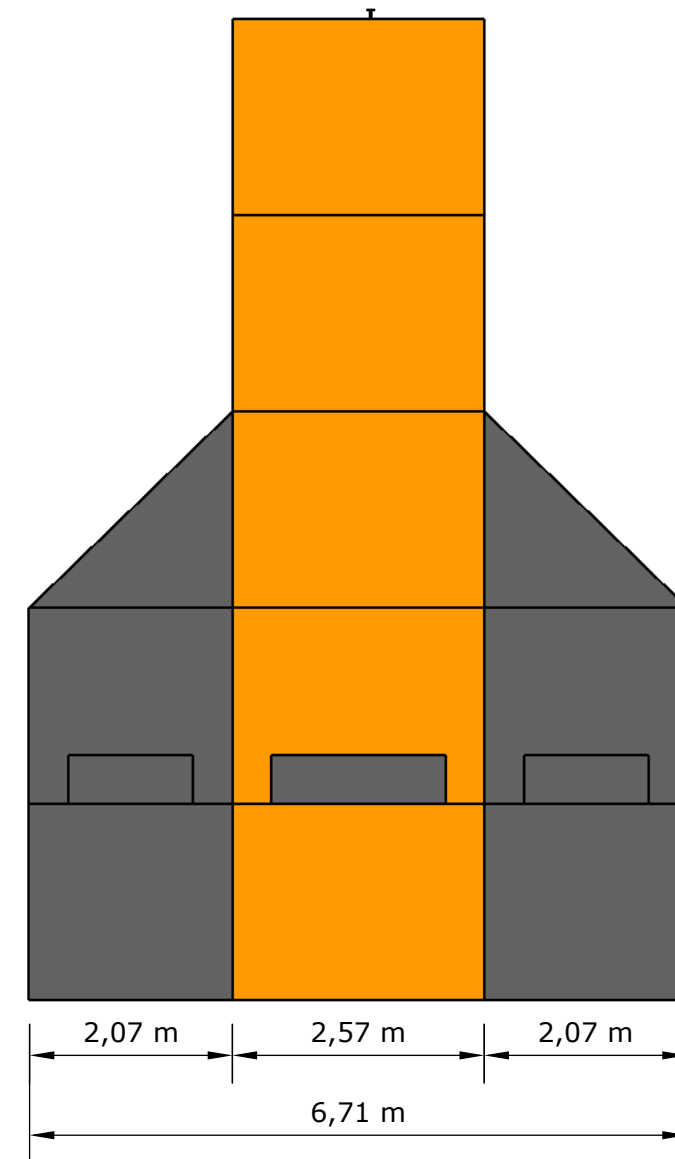
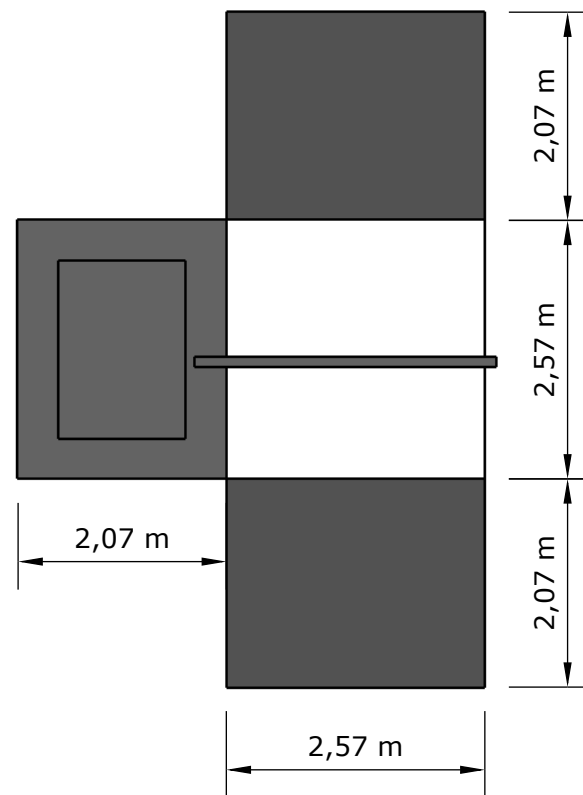




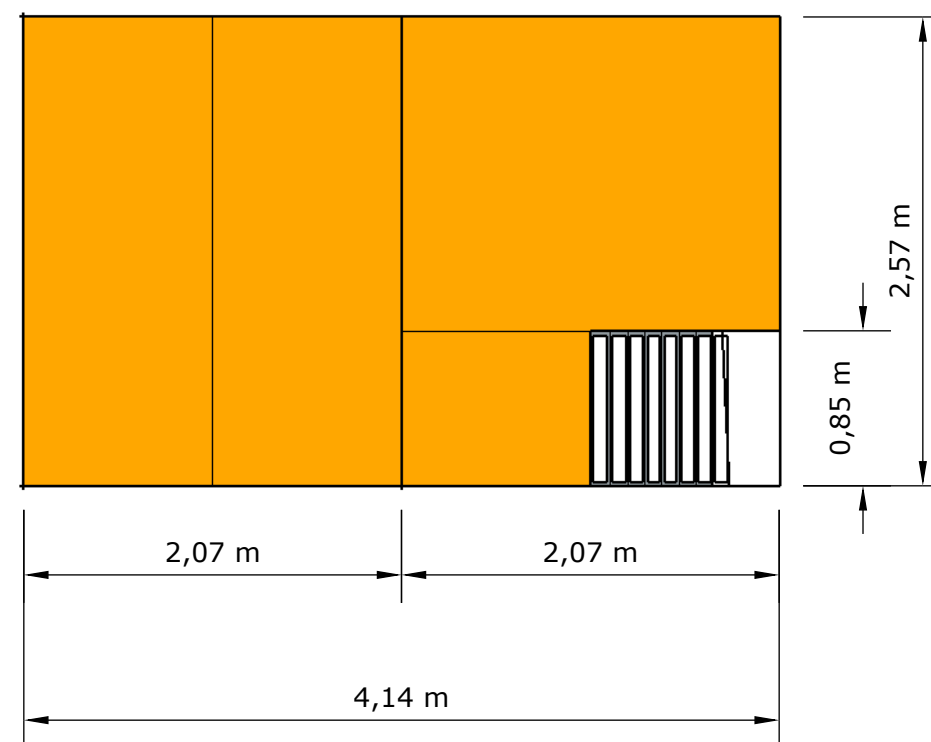
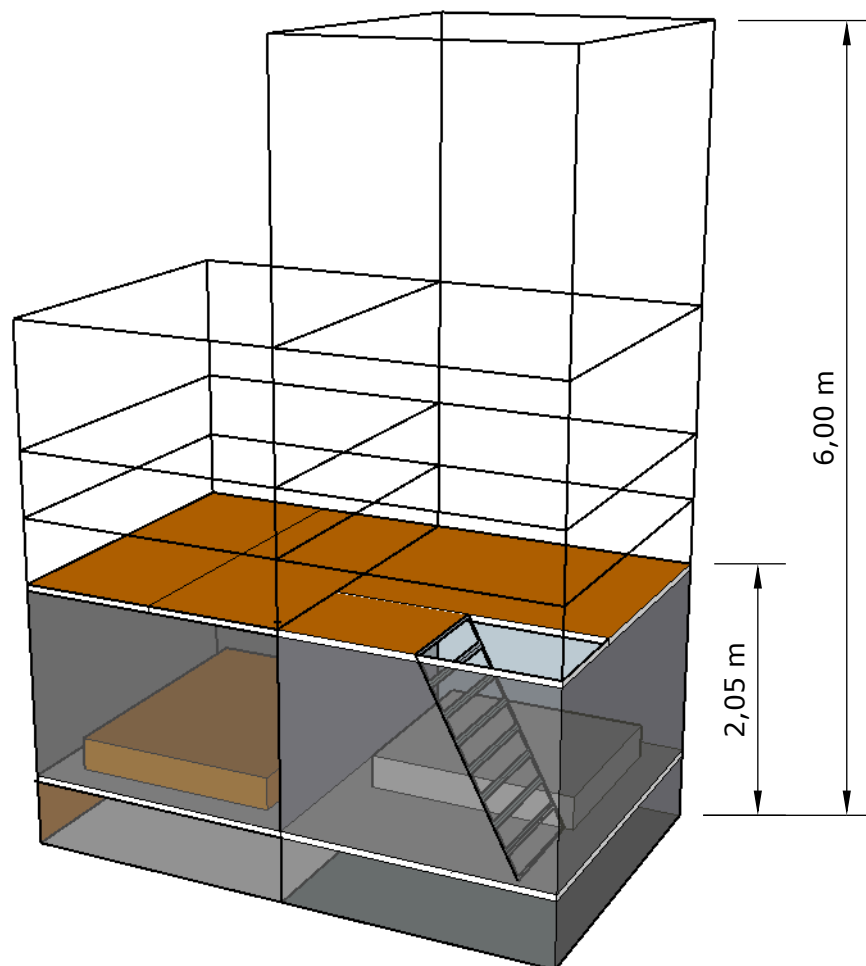




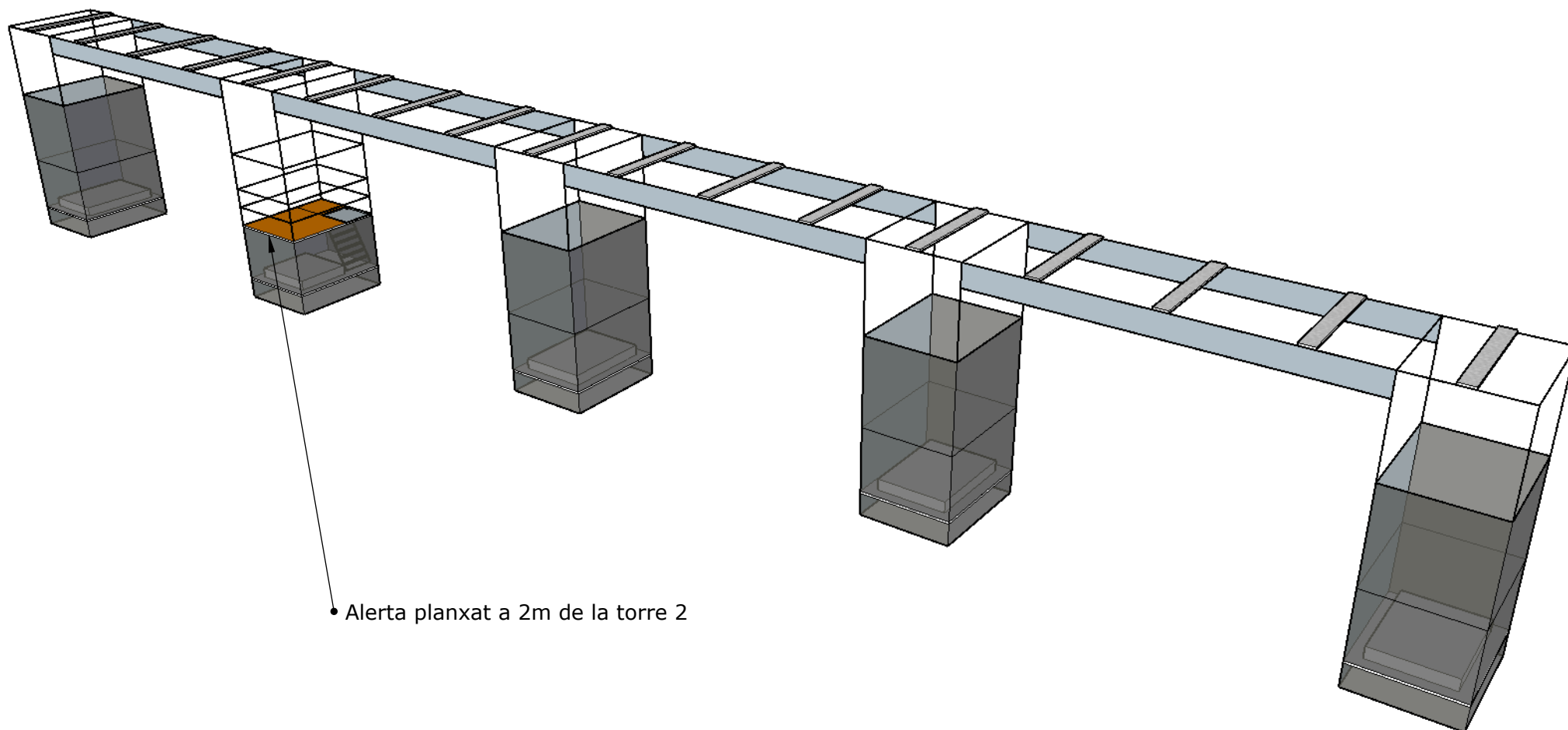
2 Torres de PA



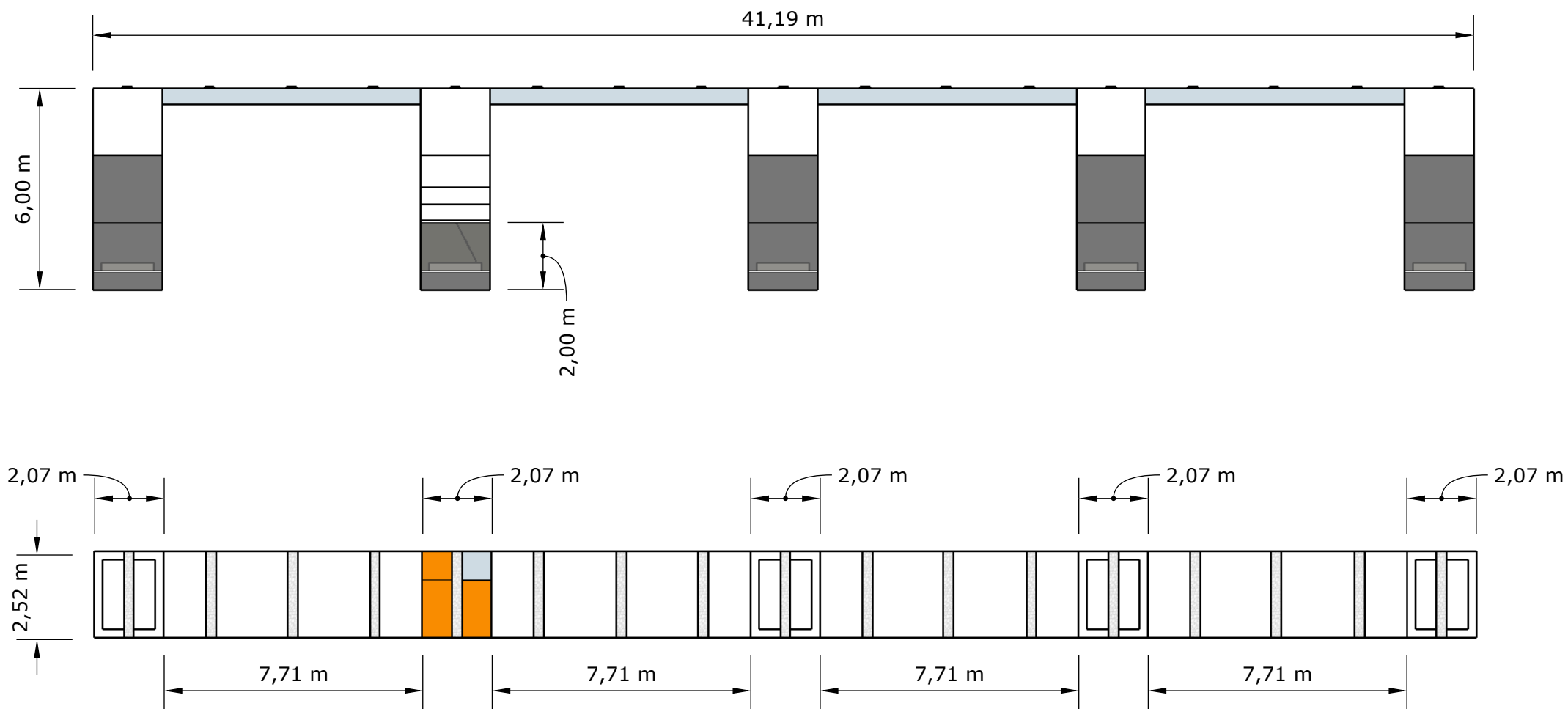
Torre reg costat mar



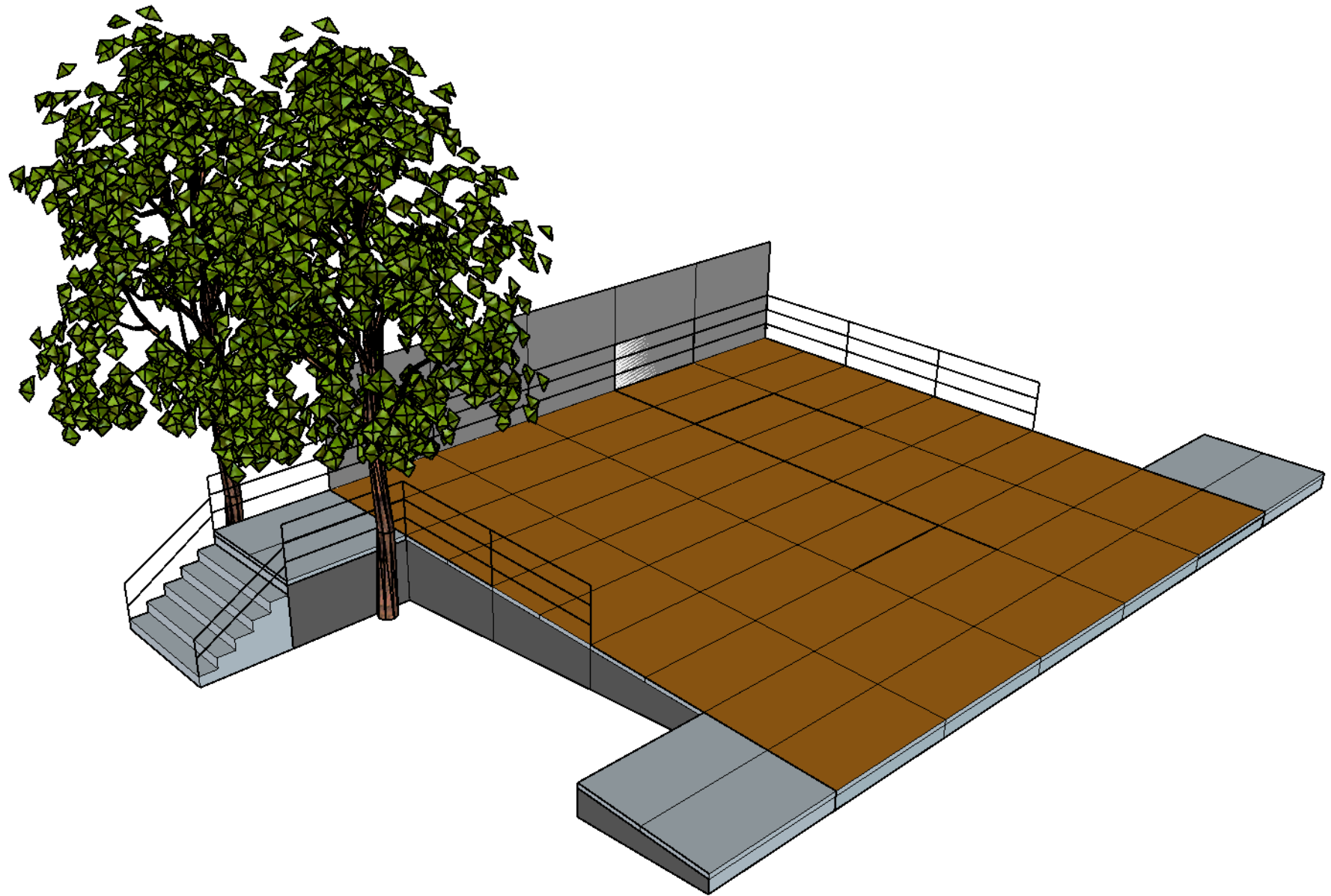
Torres reg costat muntanya

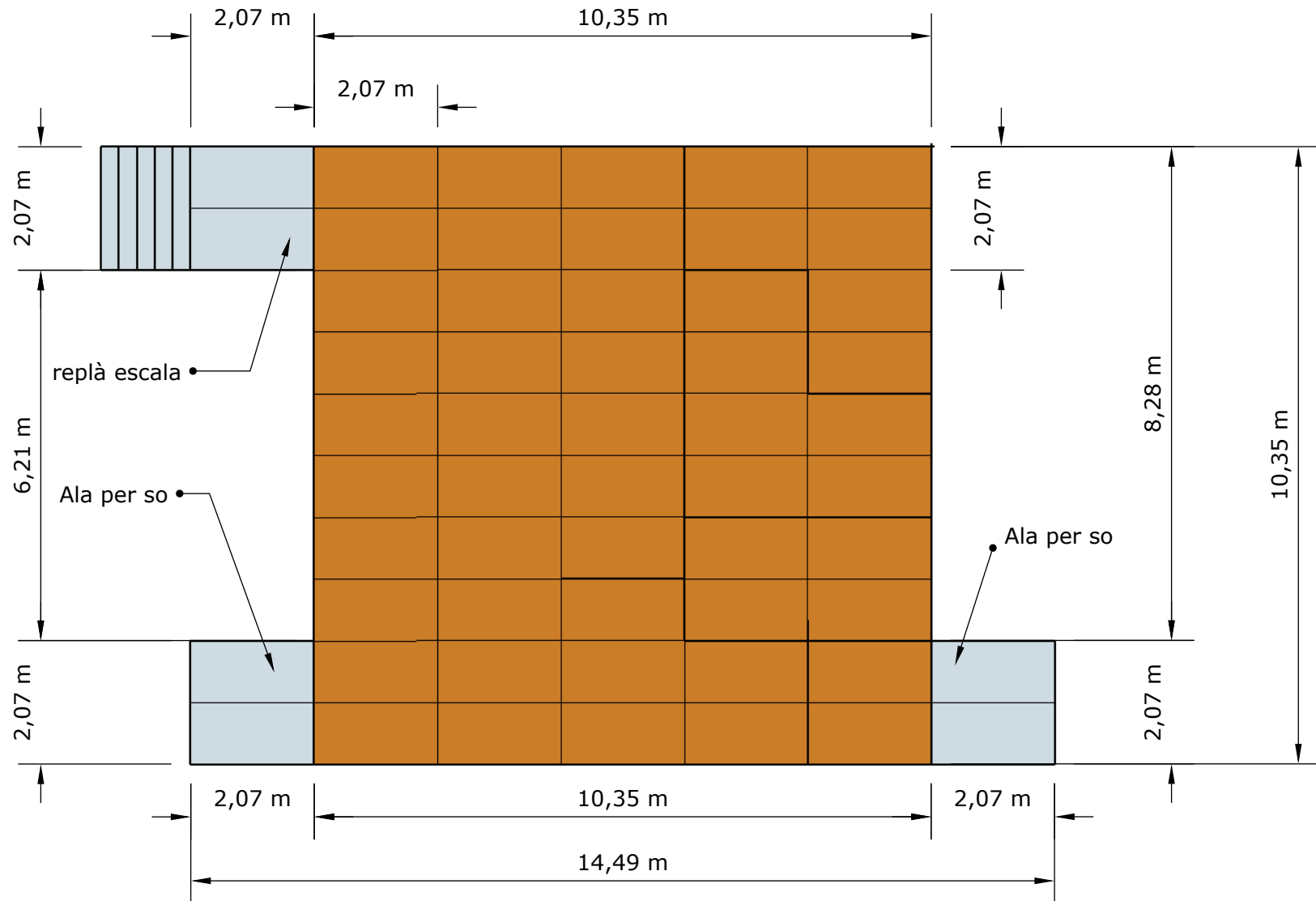


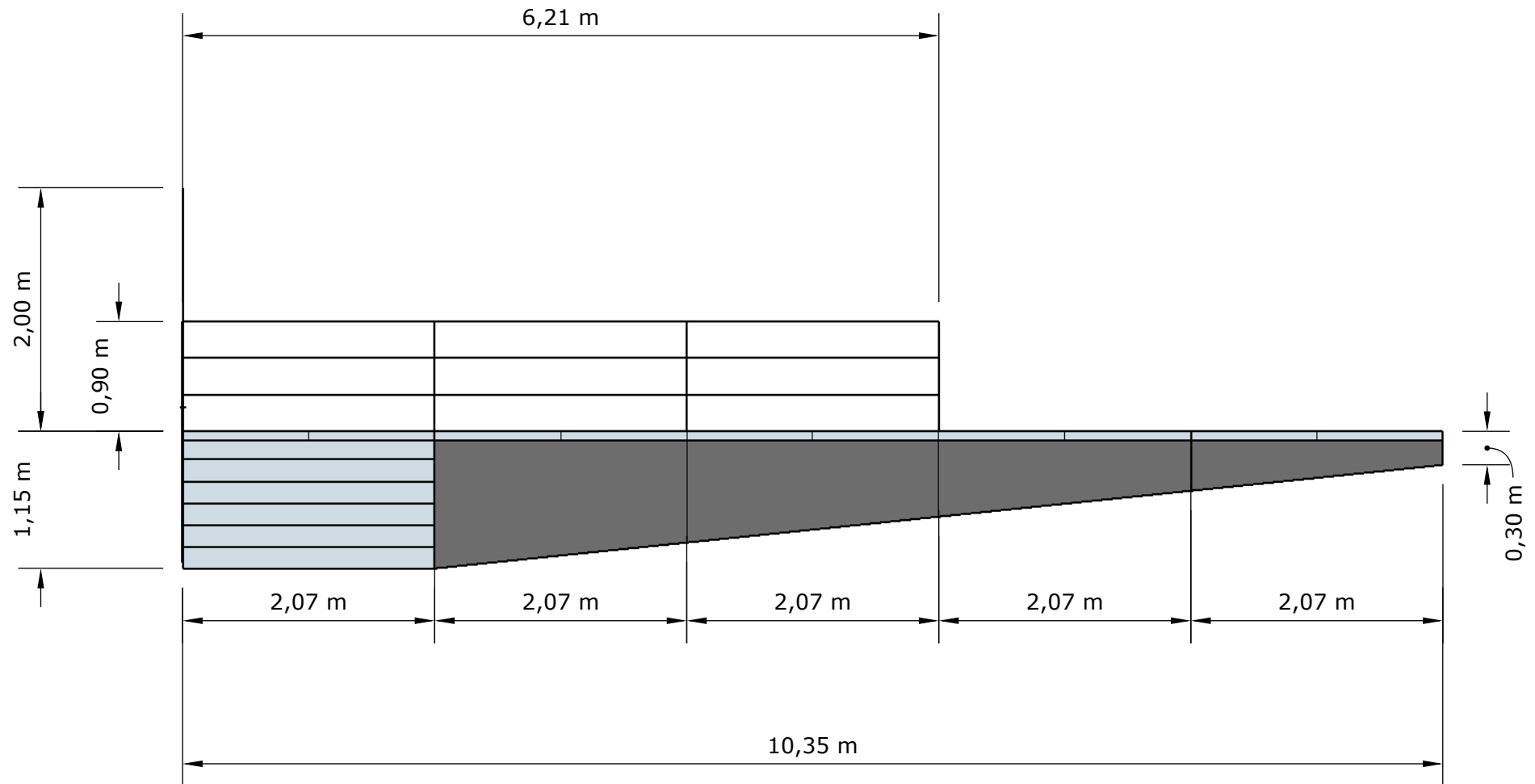
• Alerta planxat a 2m de la torre 2



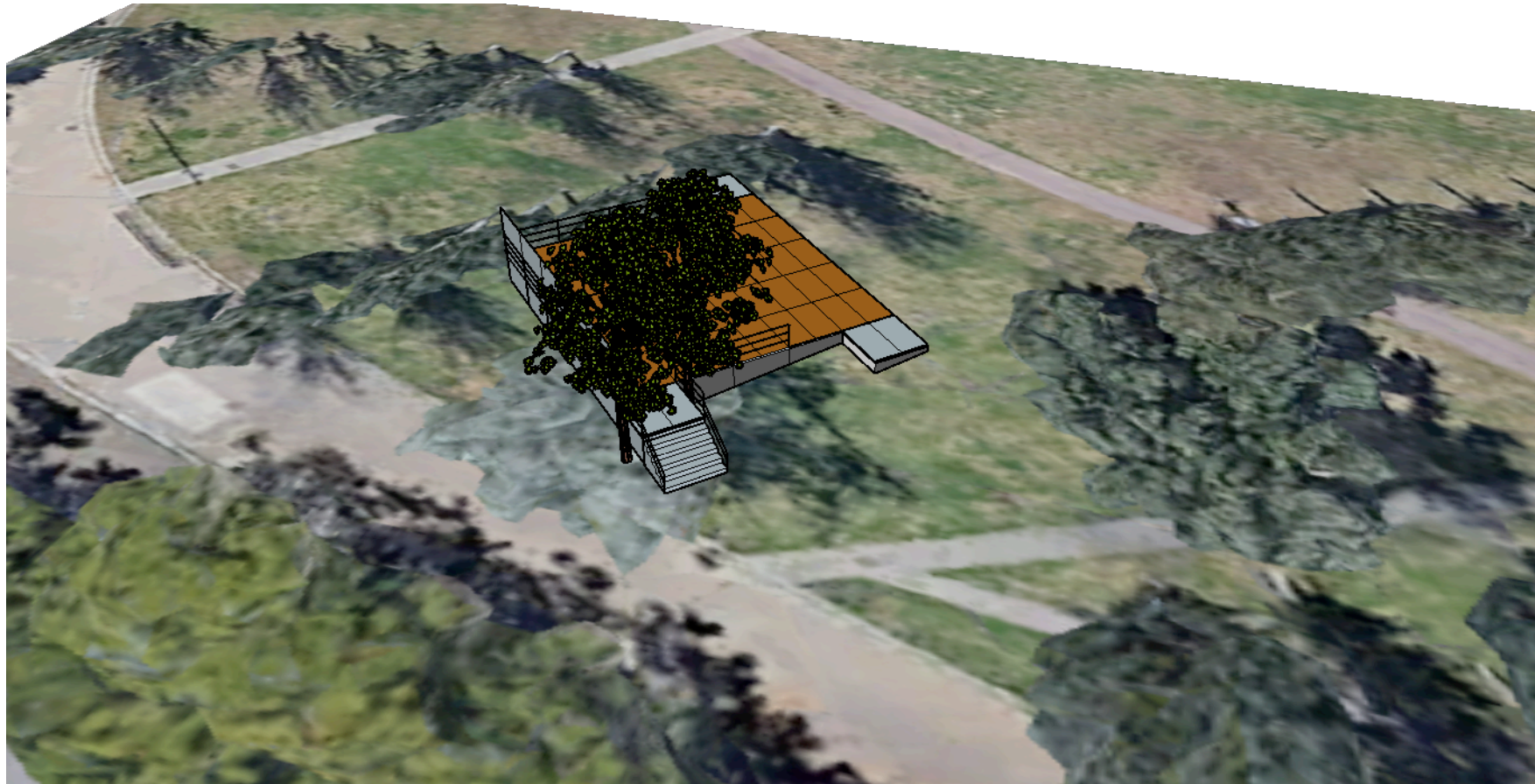
Torres reg costat muntanya



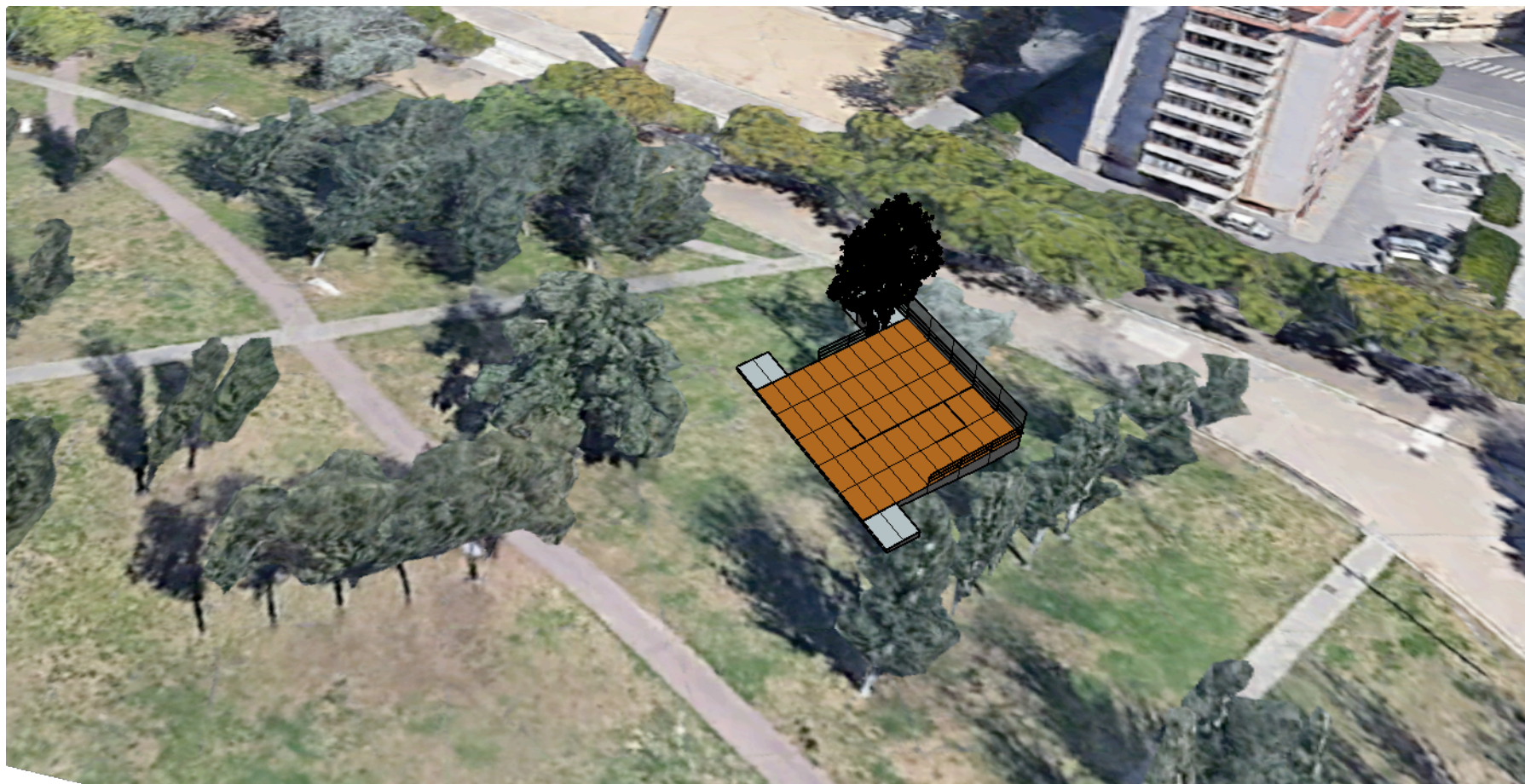




Nota/ Les cotes relatives al pendent del terreny son aproximades

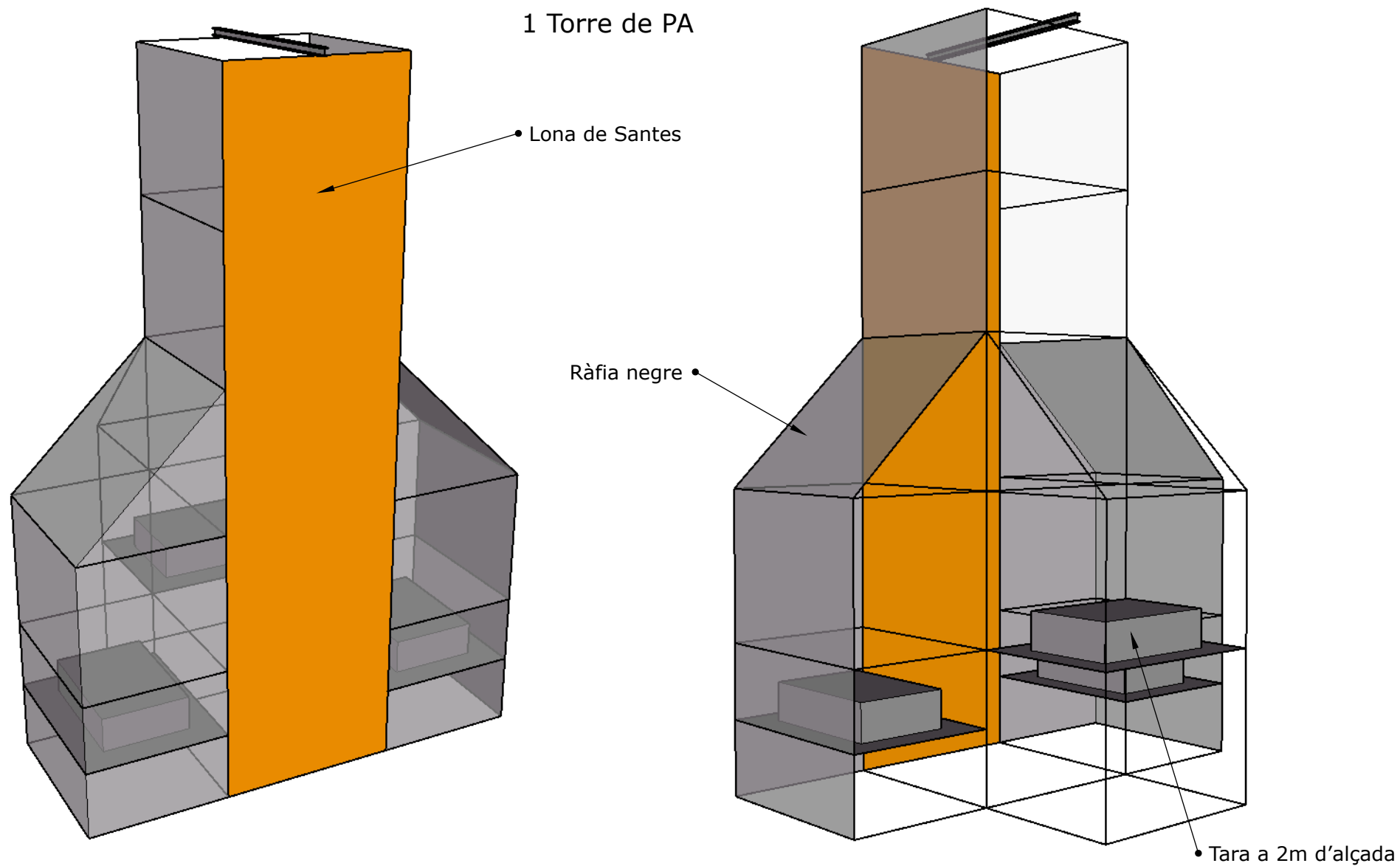


Alerta a l'encaix entre els arbres

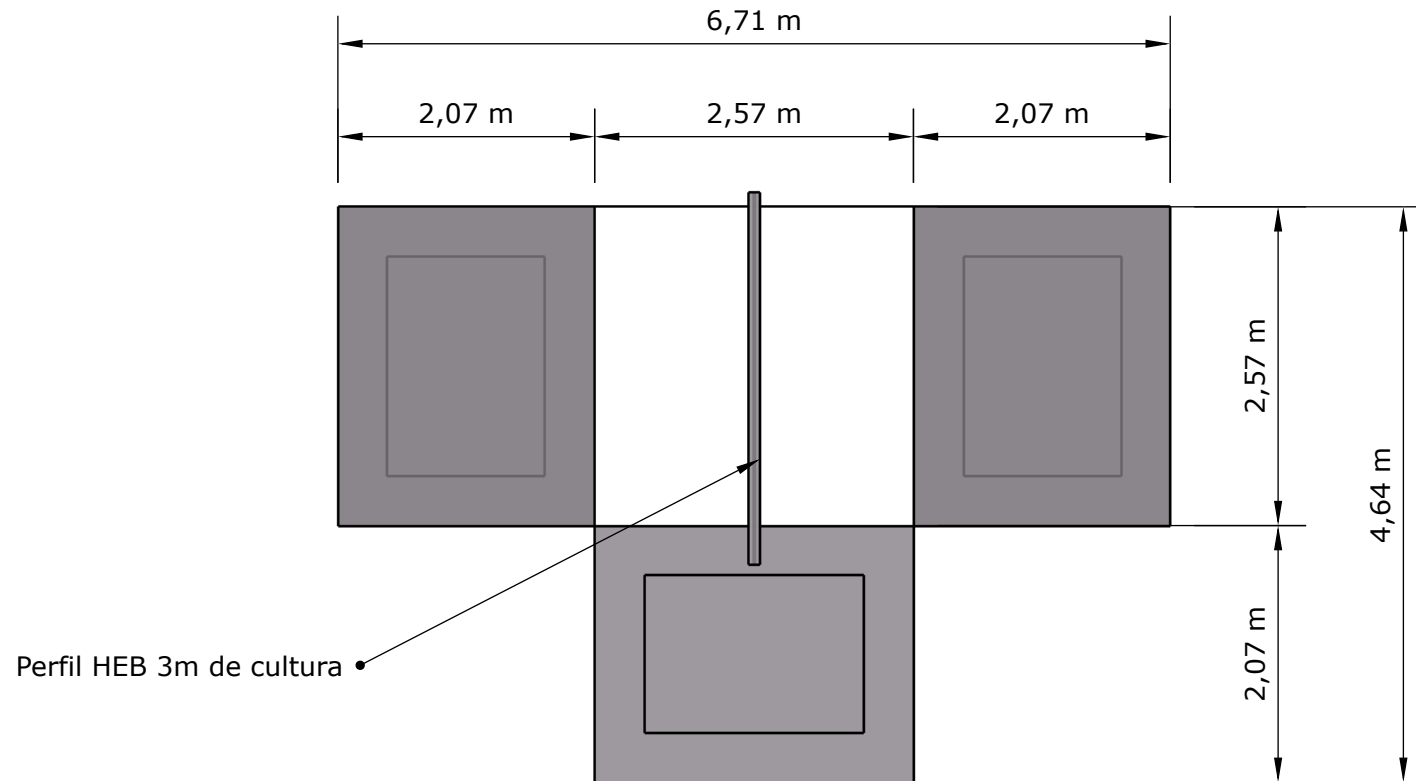




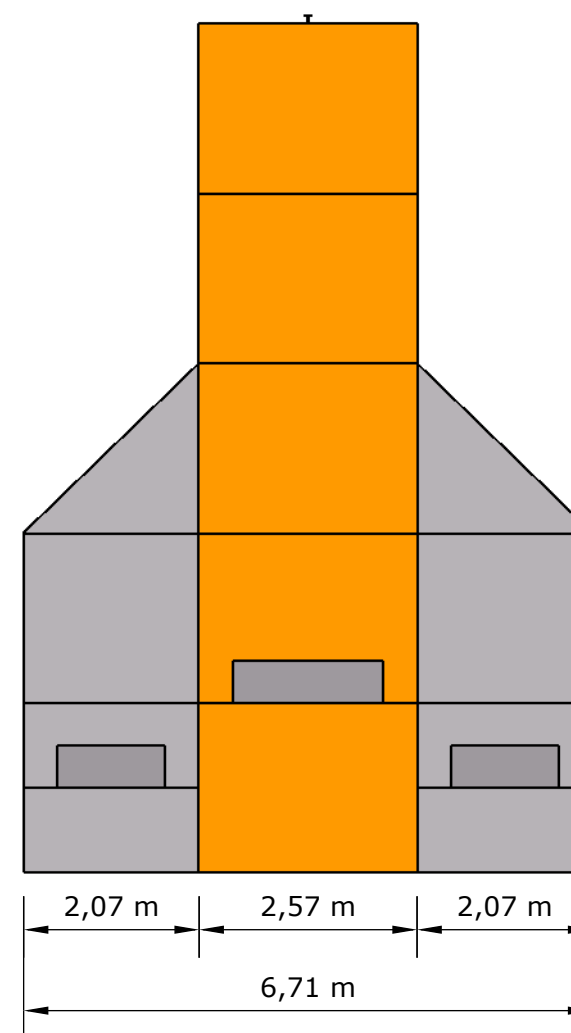
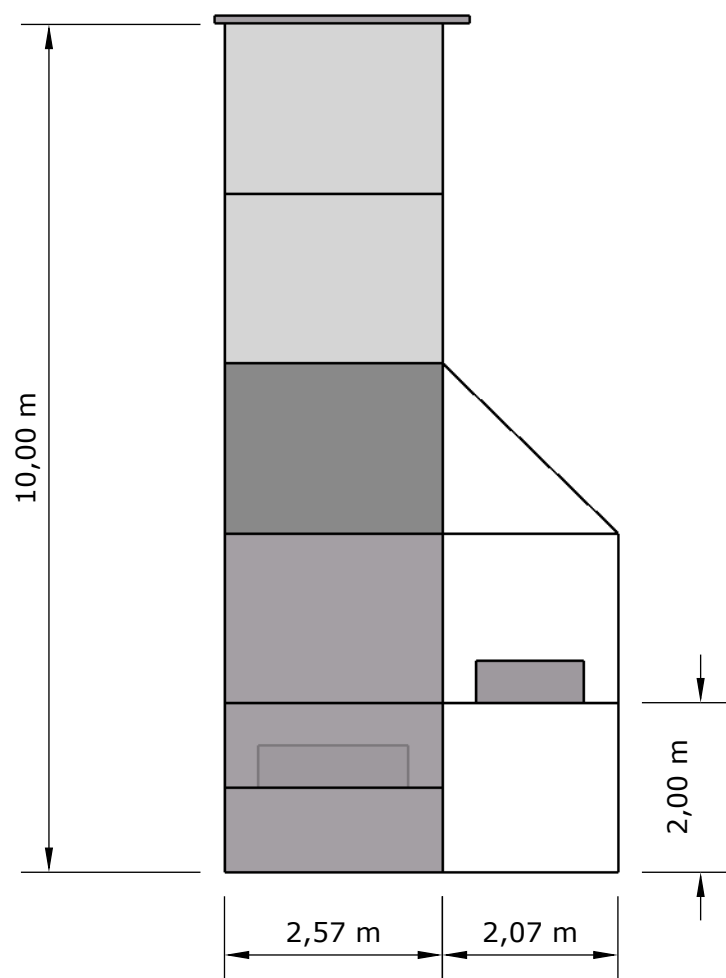
• Torre PA enfocada a riera



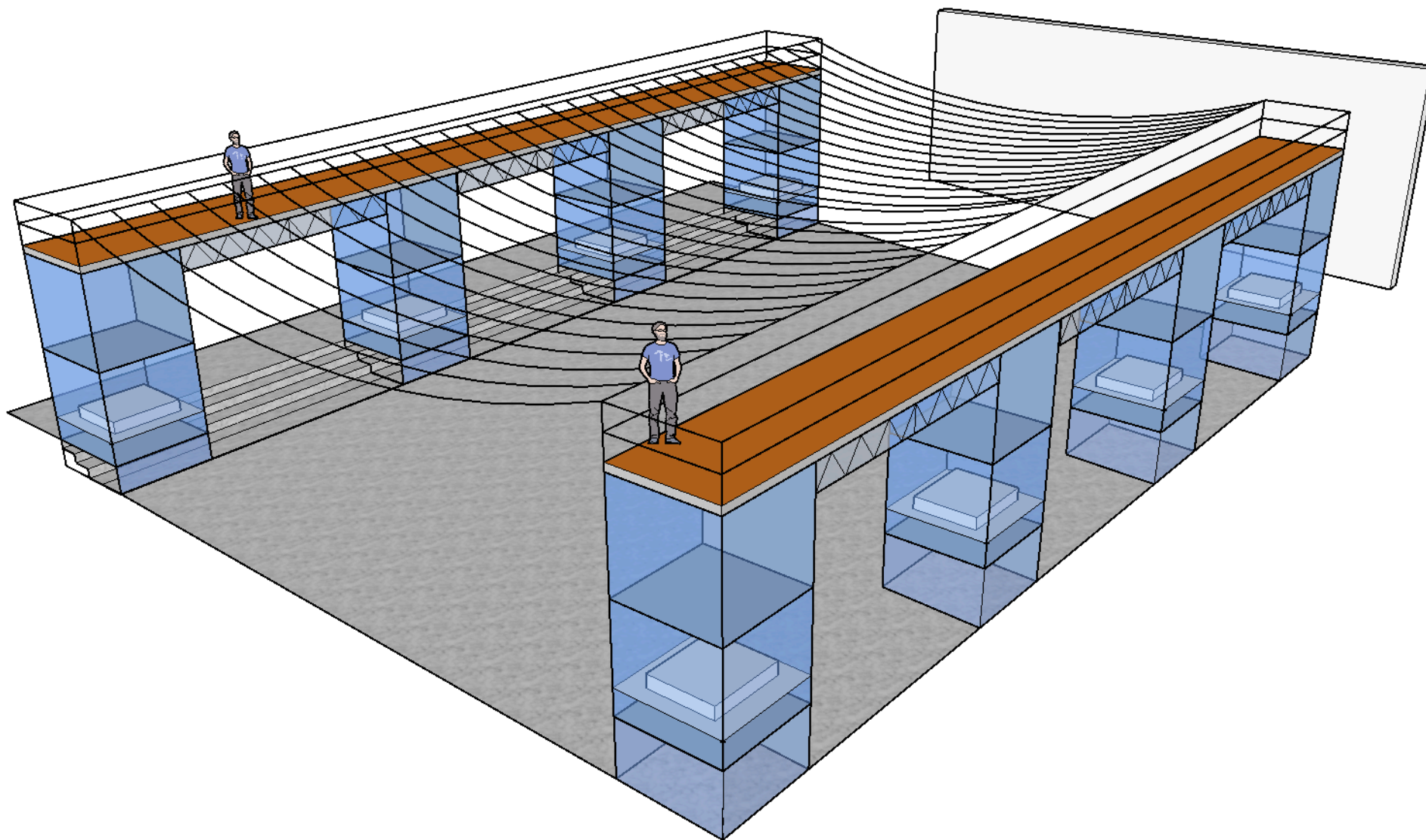
Torre de PA planta

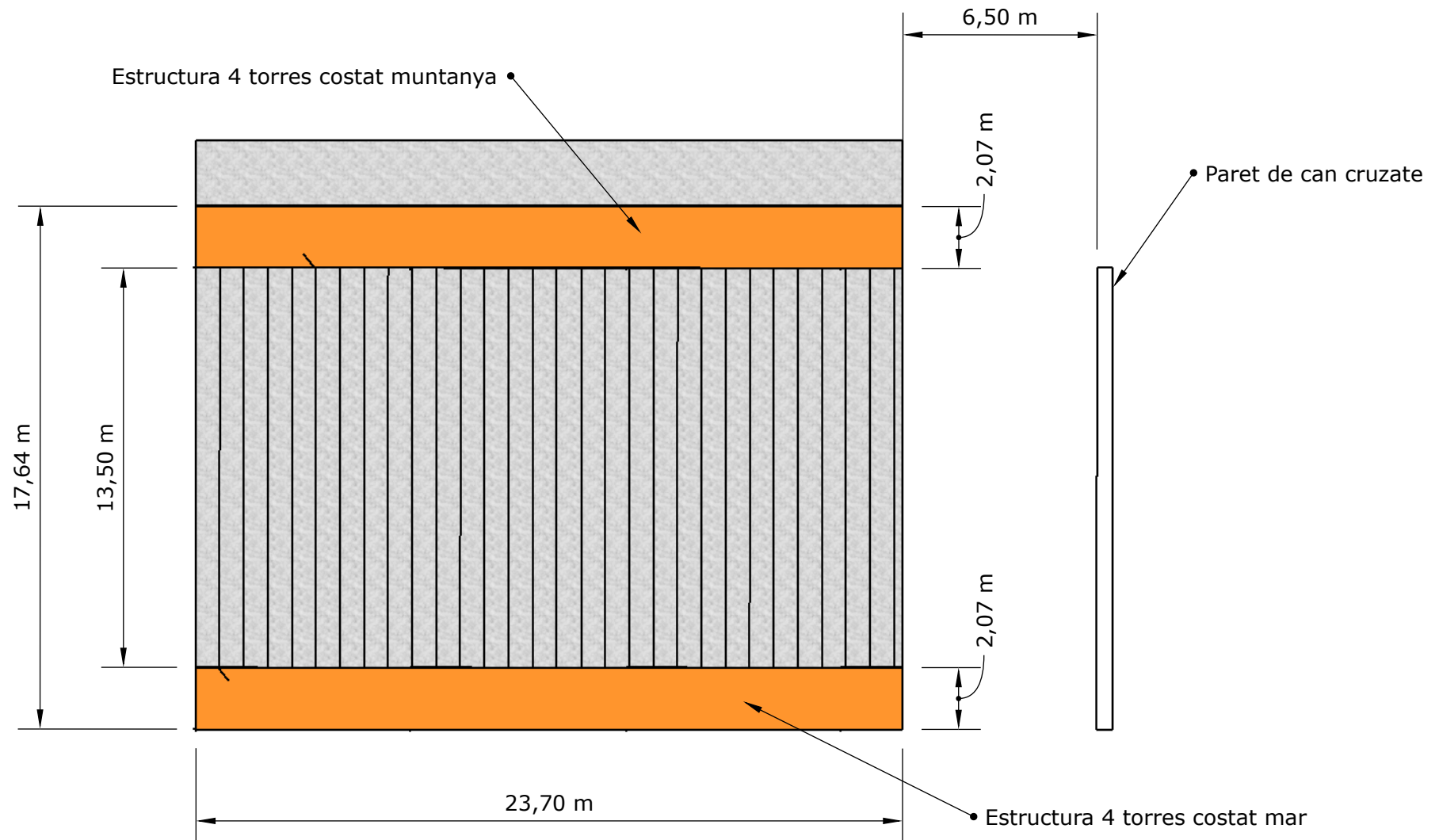


Torre de PA alçats

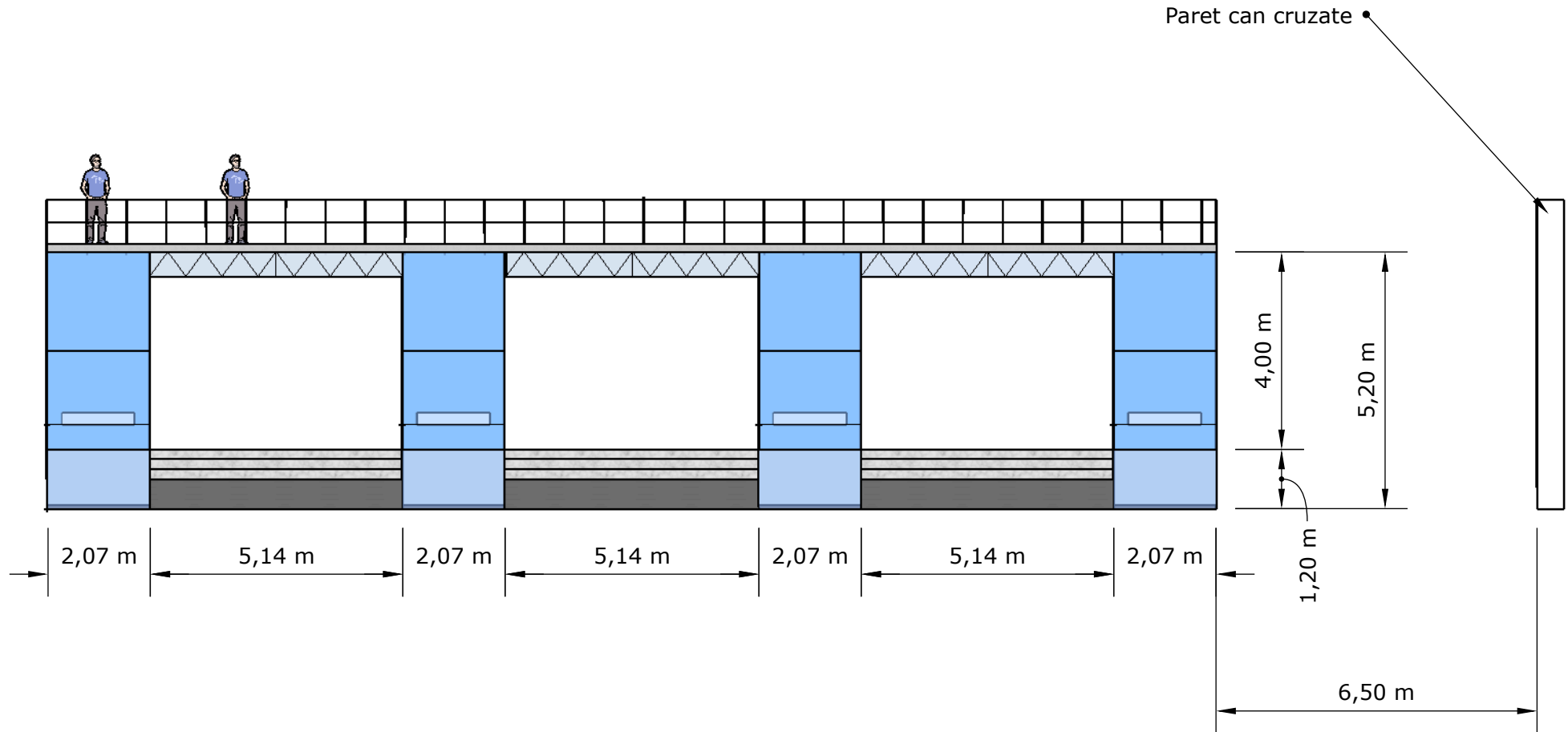


Estructura Suport pirotècnia pel final de l'escapada

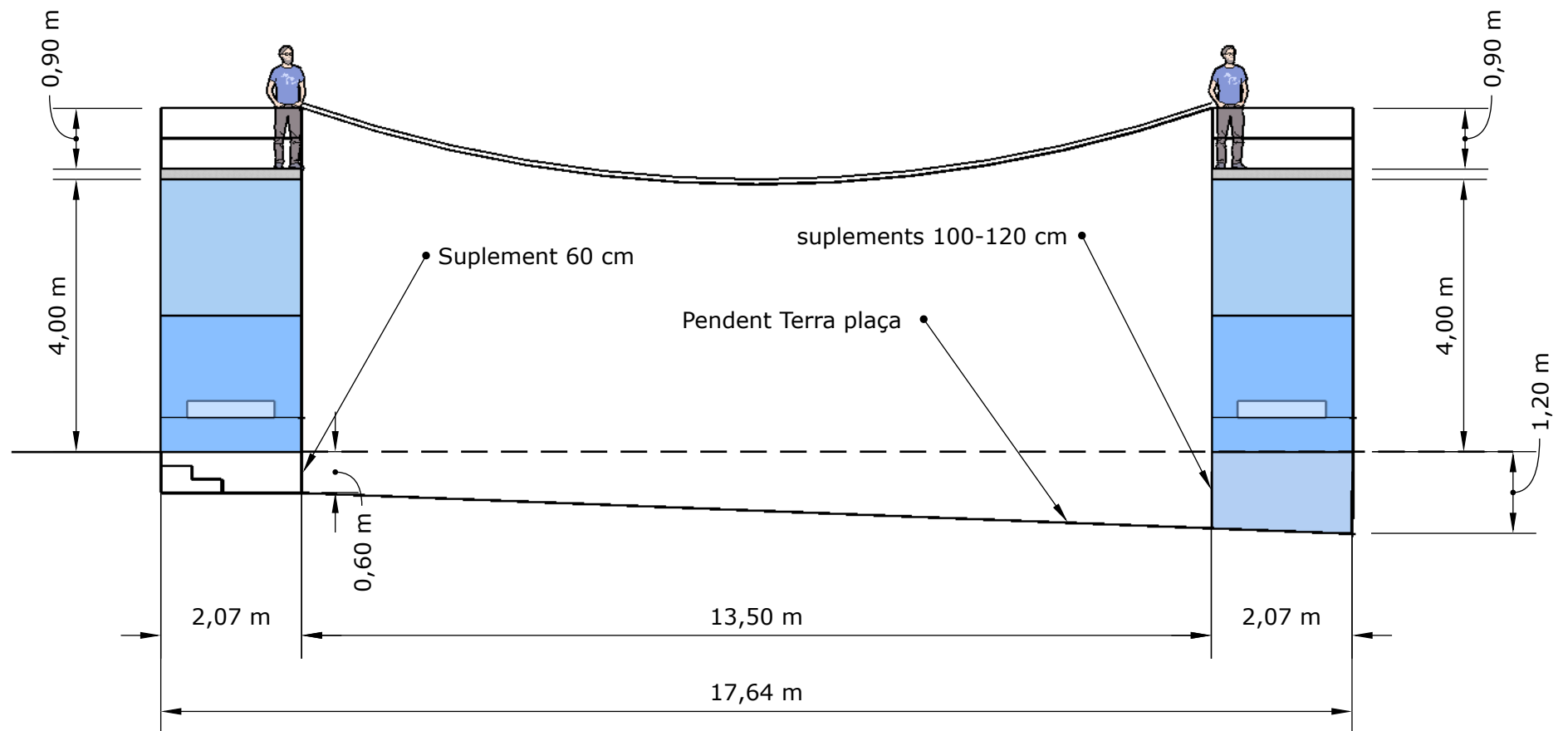


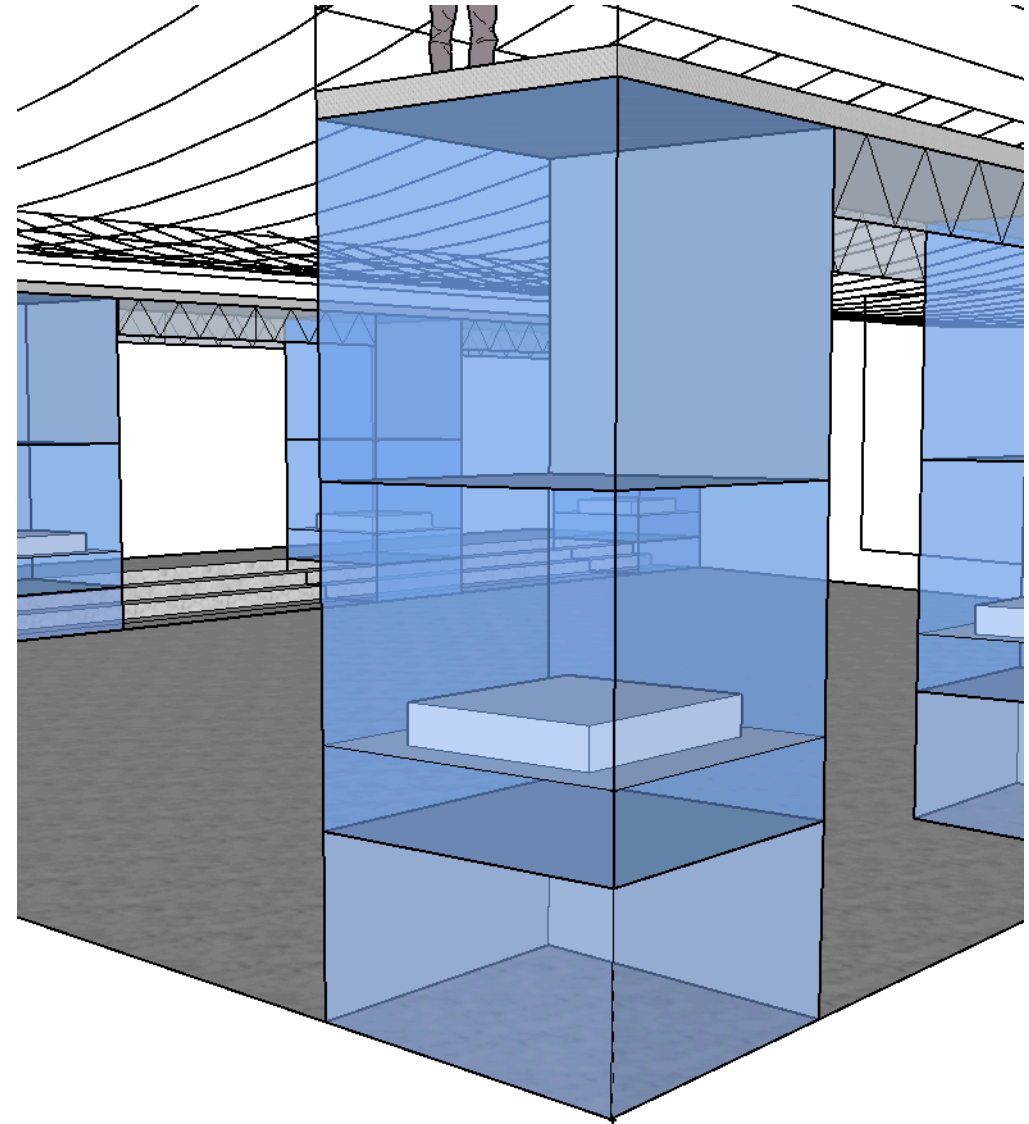
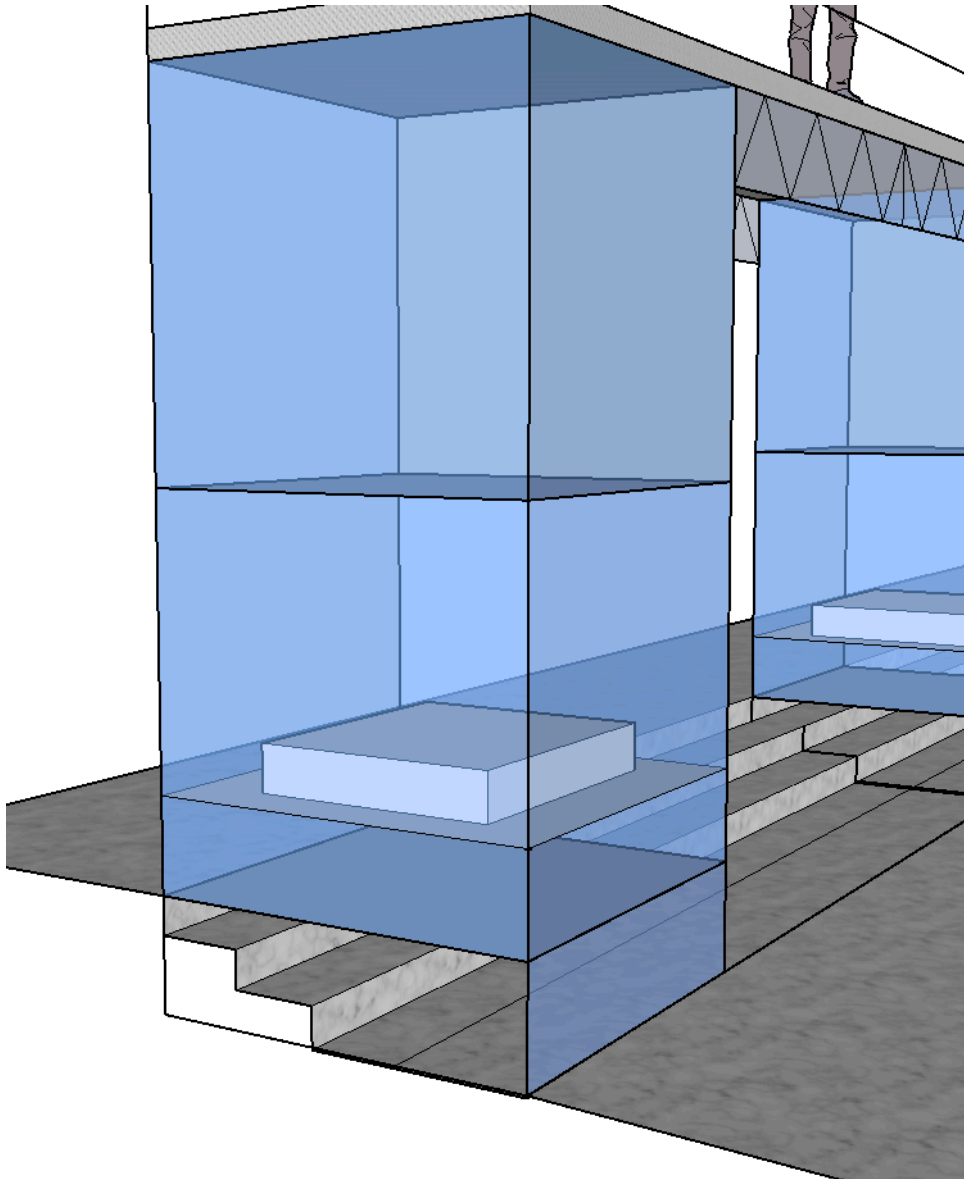


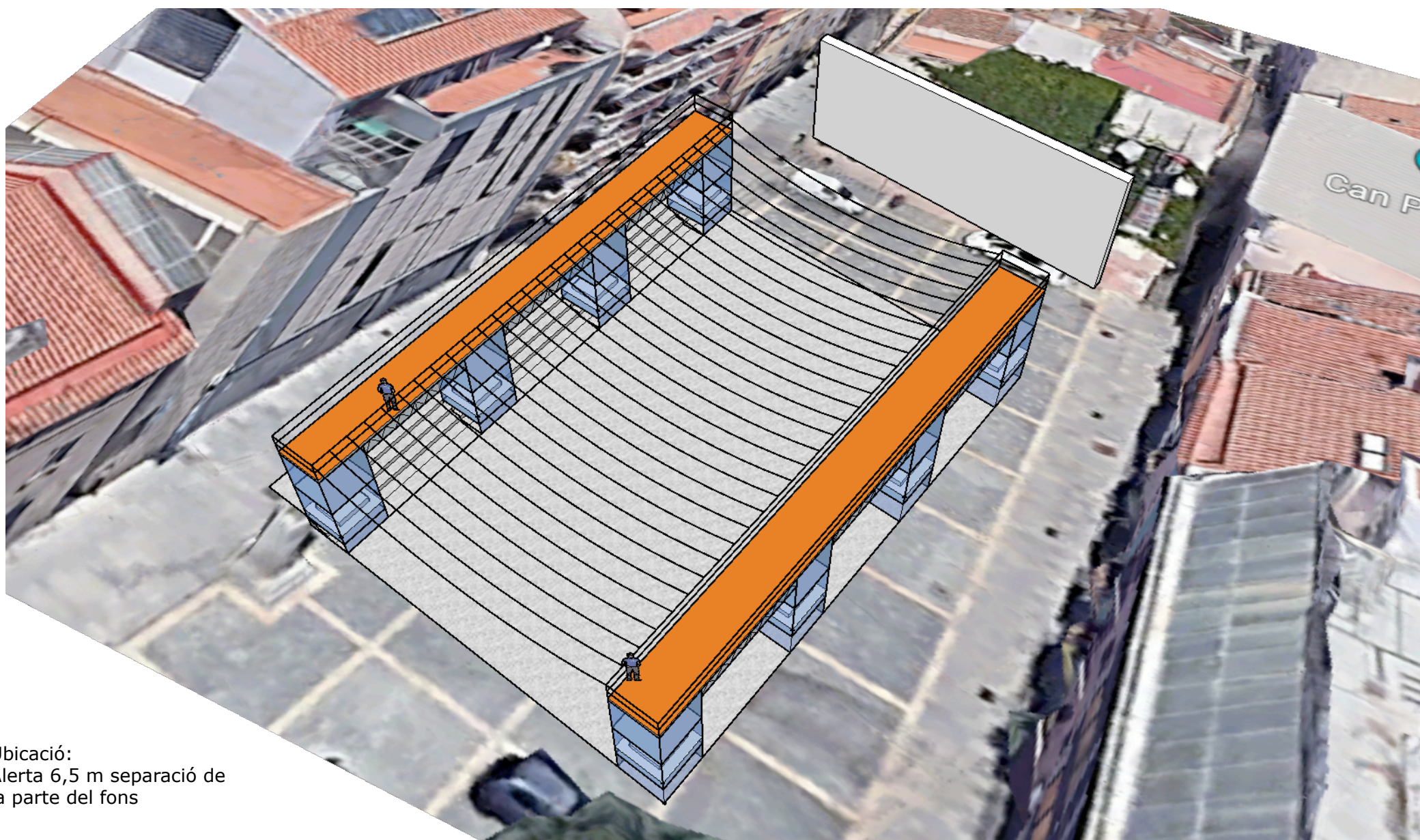
Alçat lateral



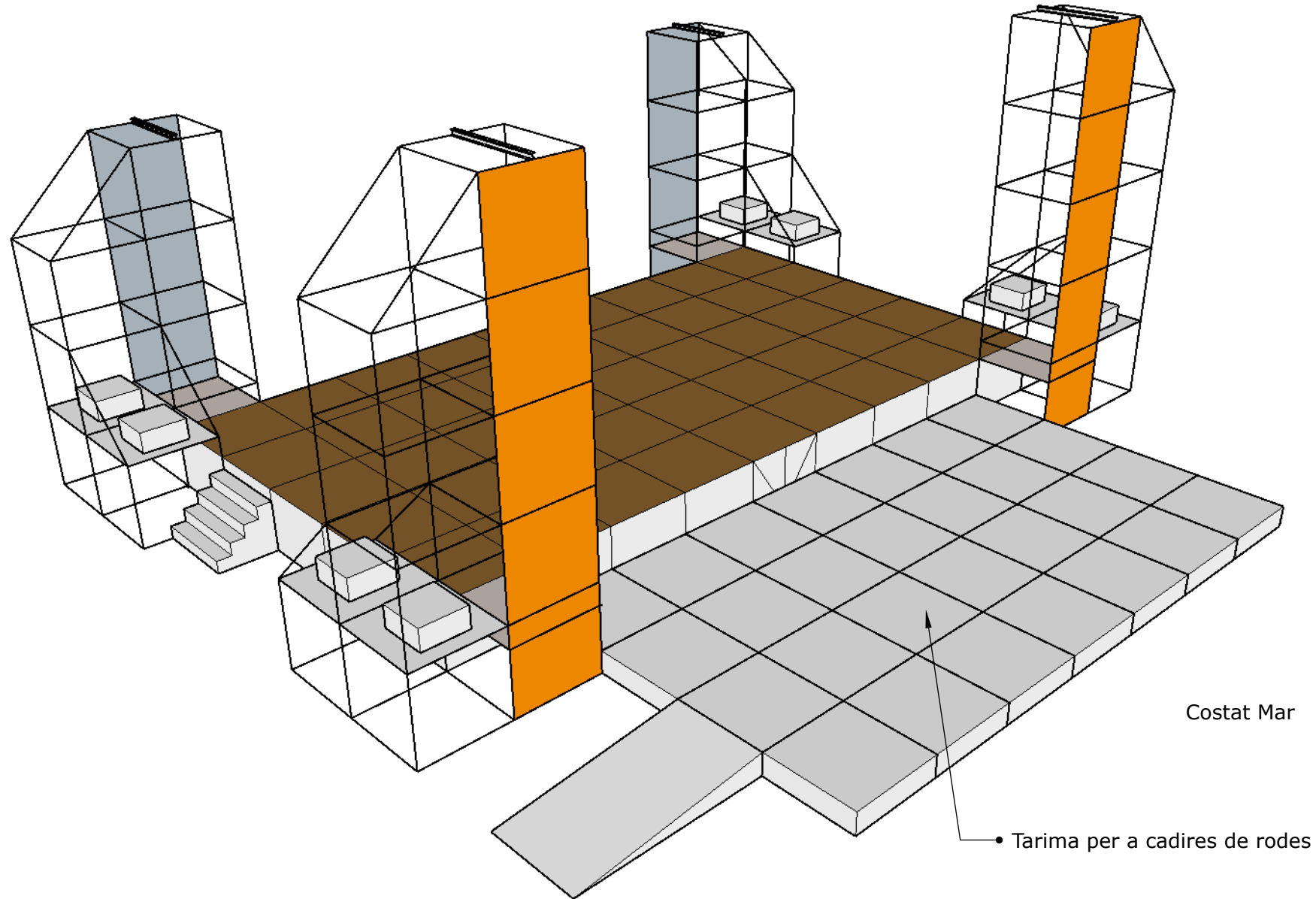
Alçat frontal



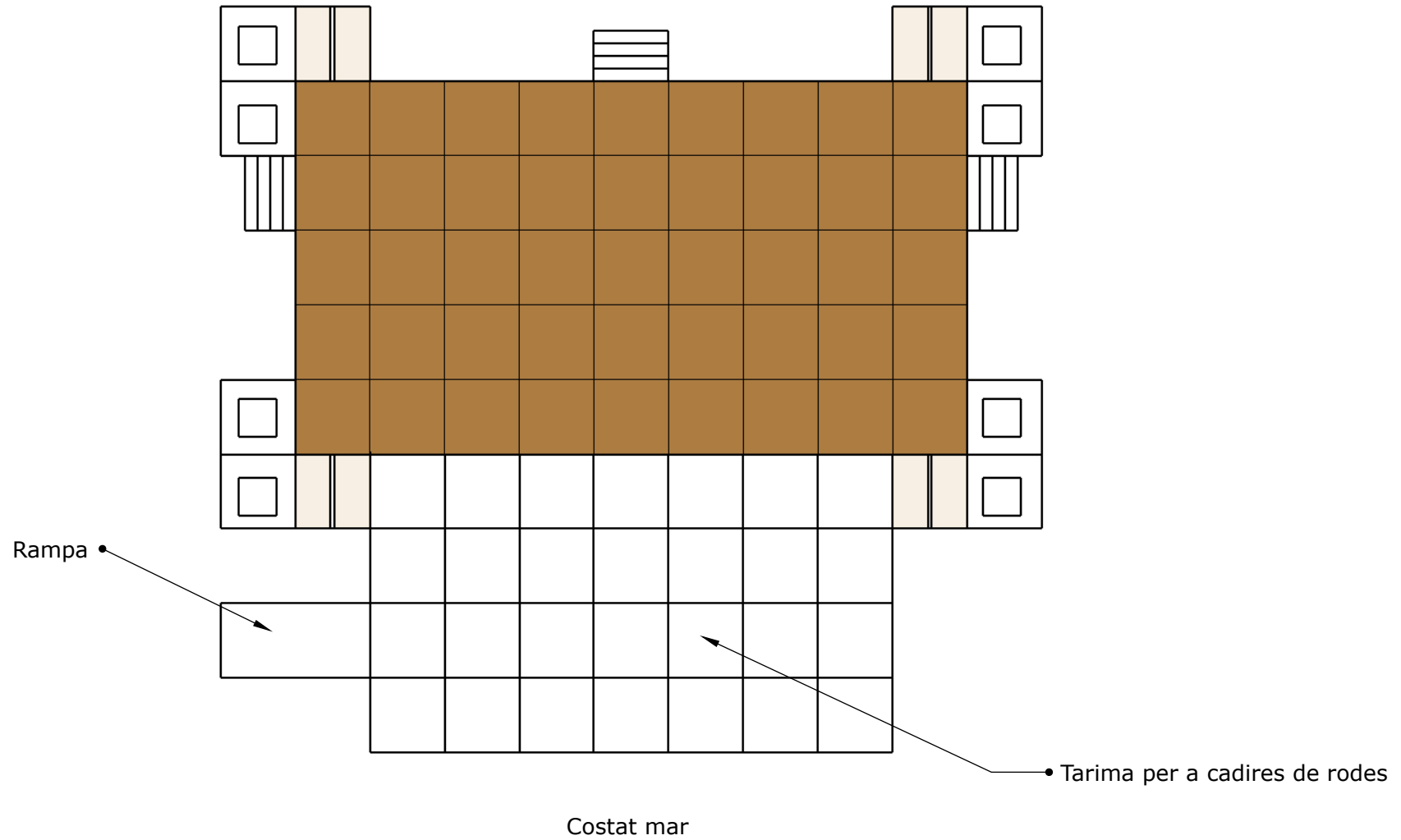


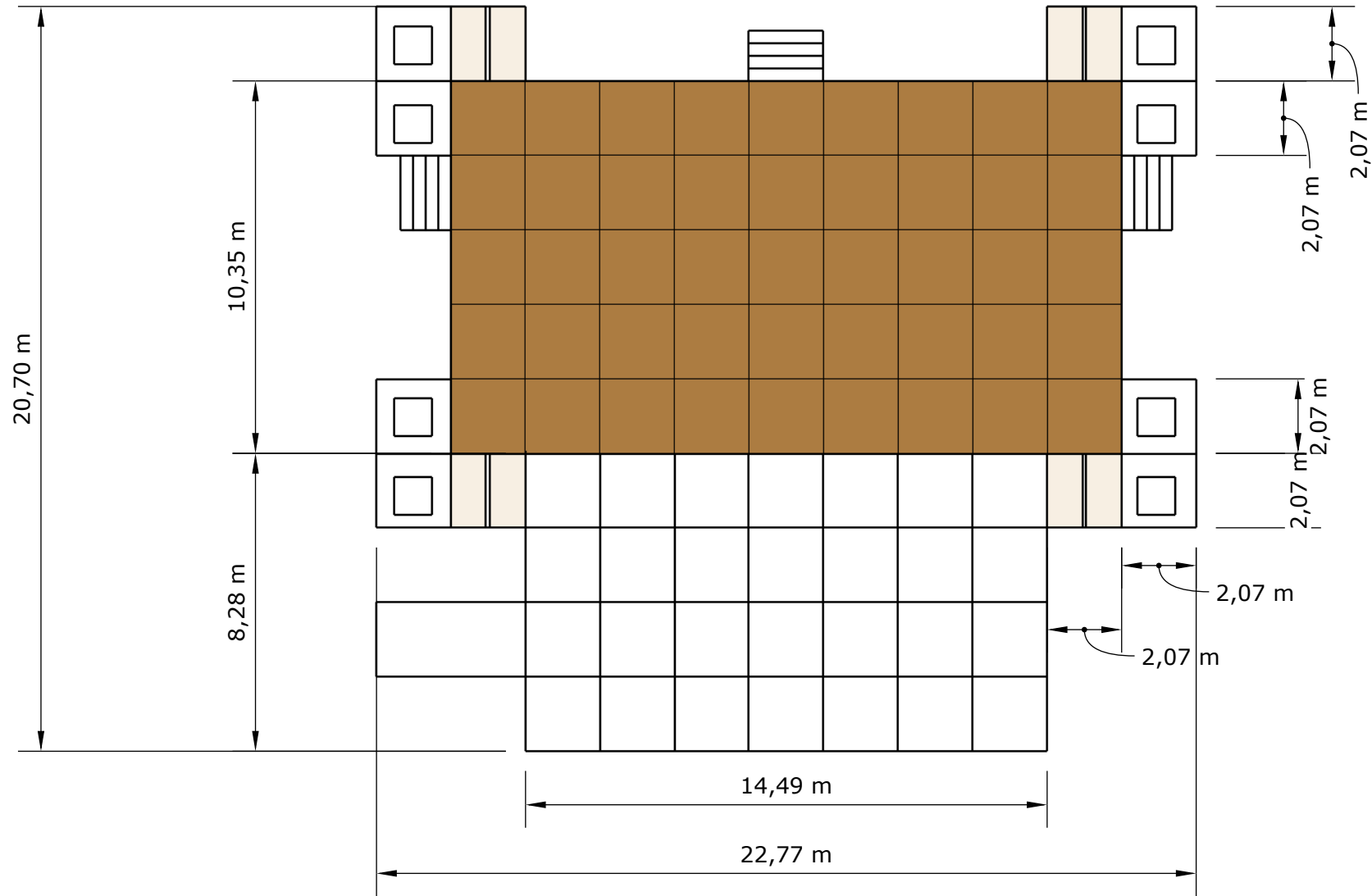


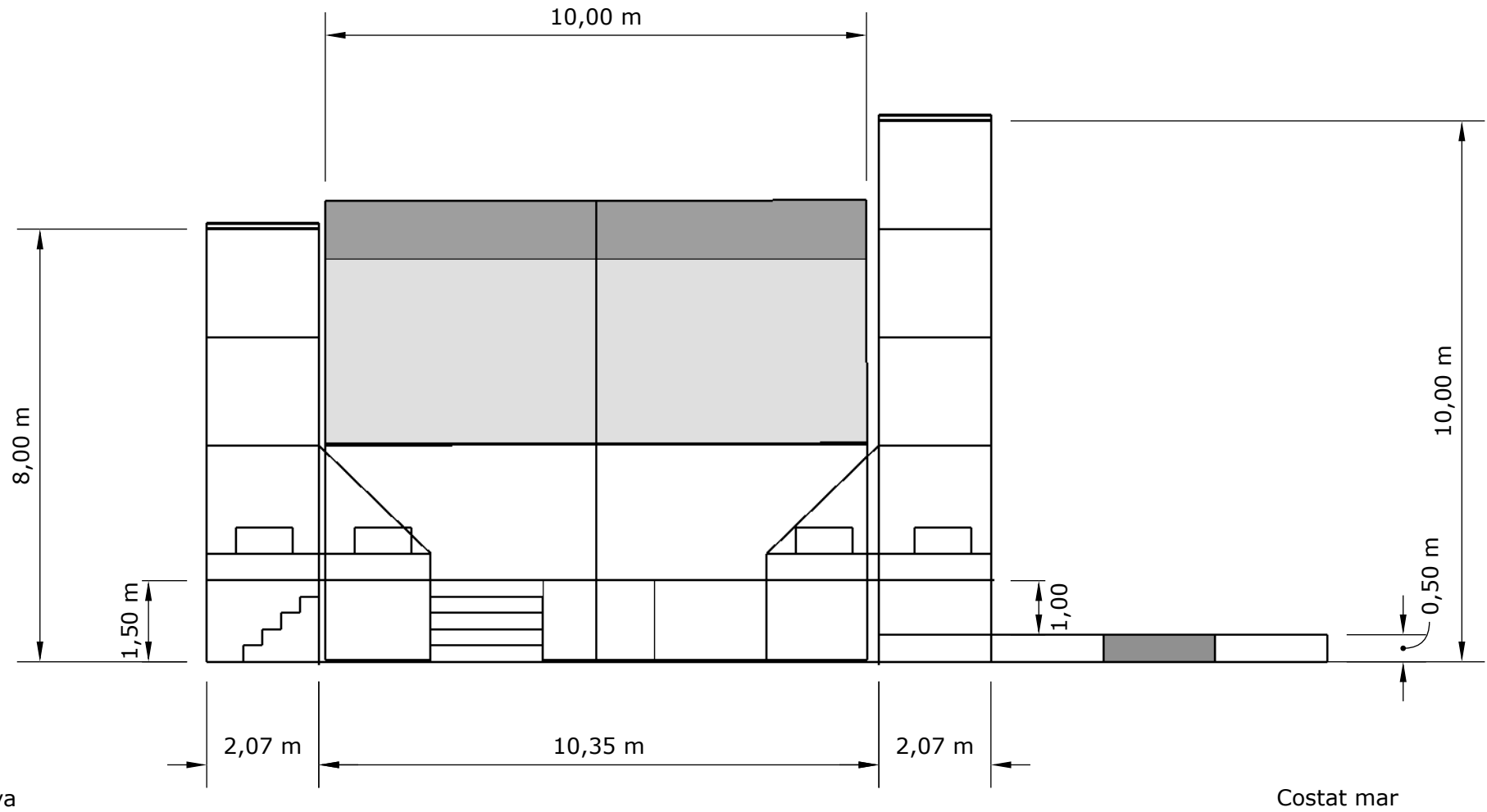
Ubicació:
Alerta 6,5 m separació de
la parte del fons

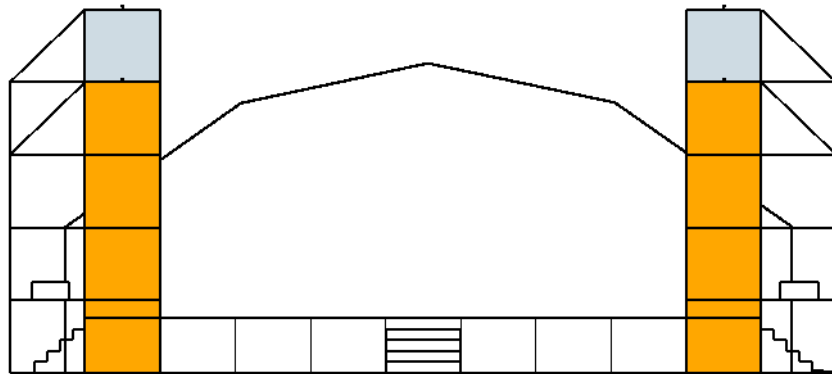


Costat muntanya

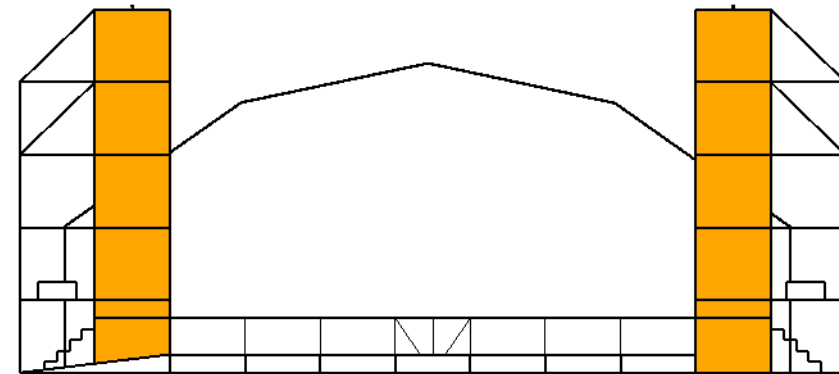




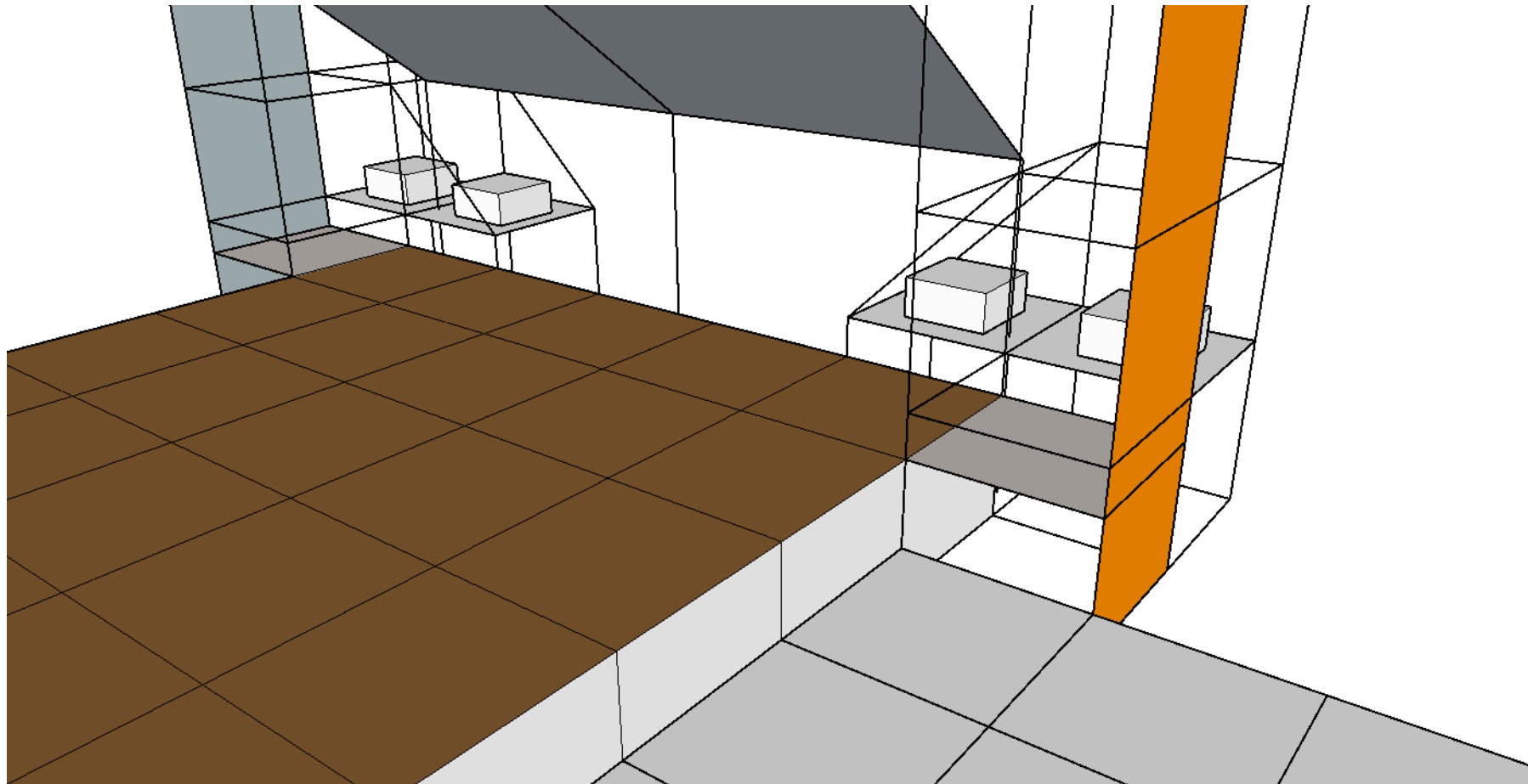




Frontal costat muntanya

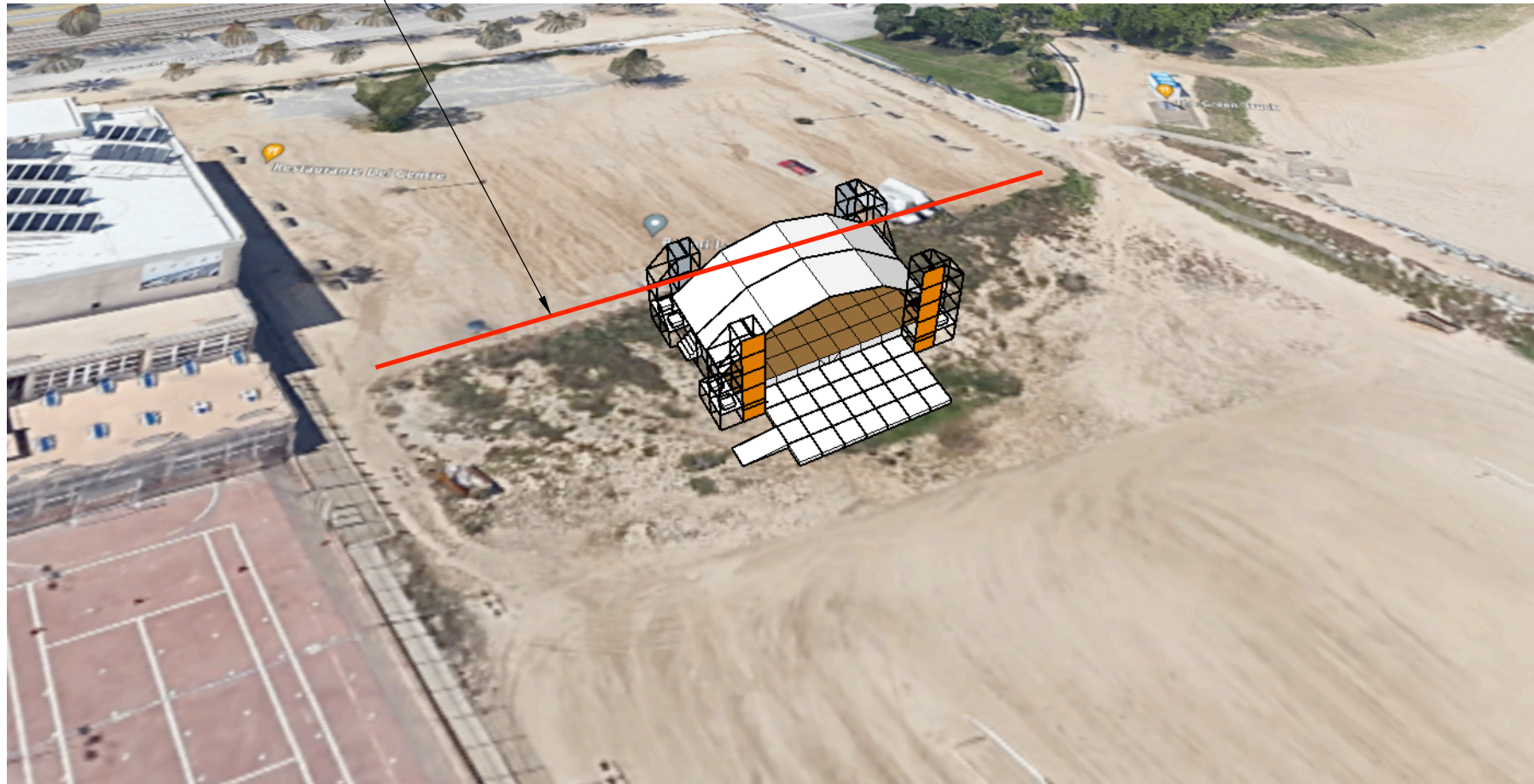


Frontal costat mar

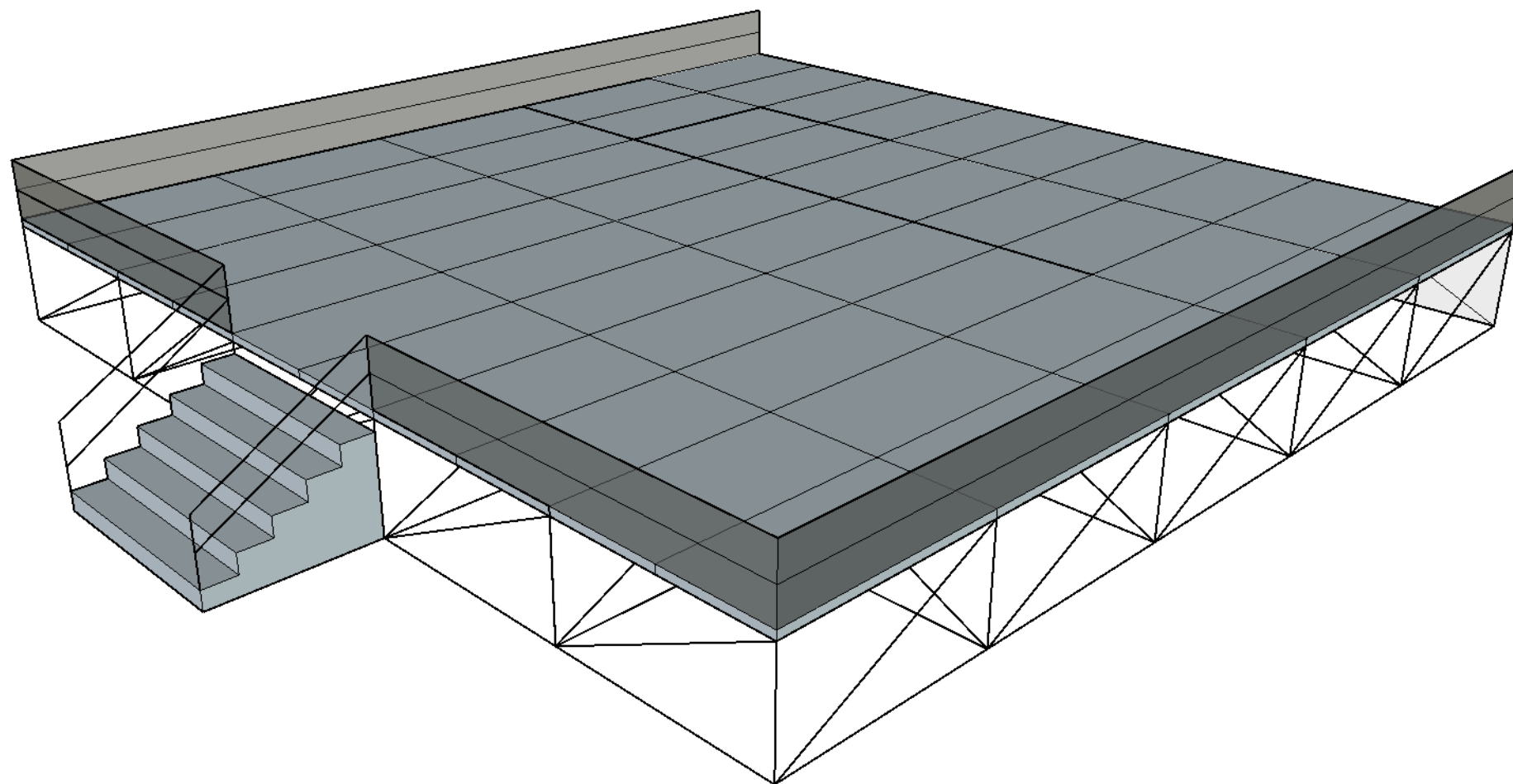


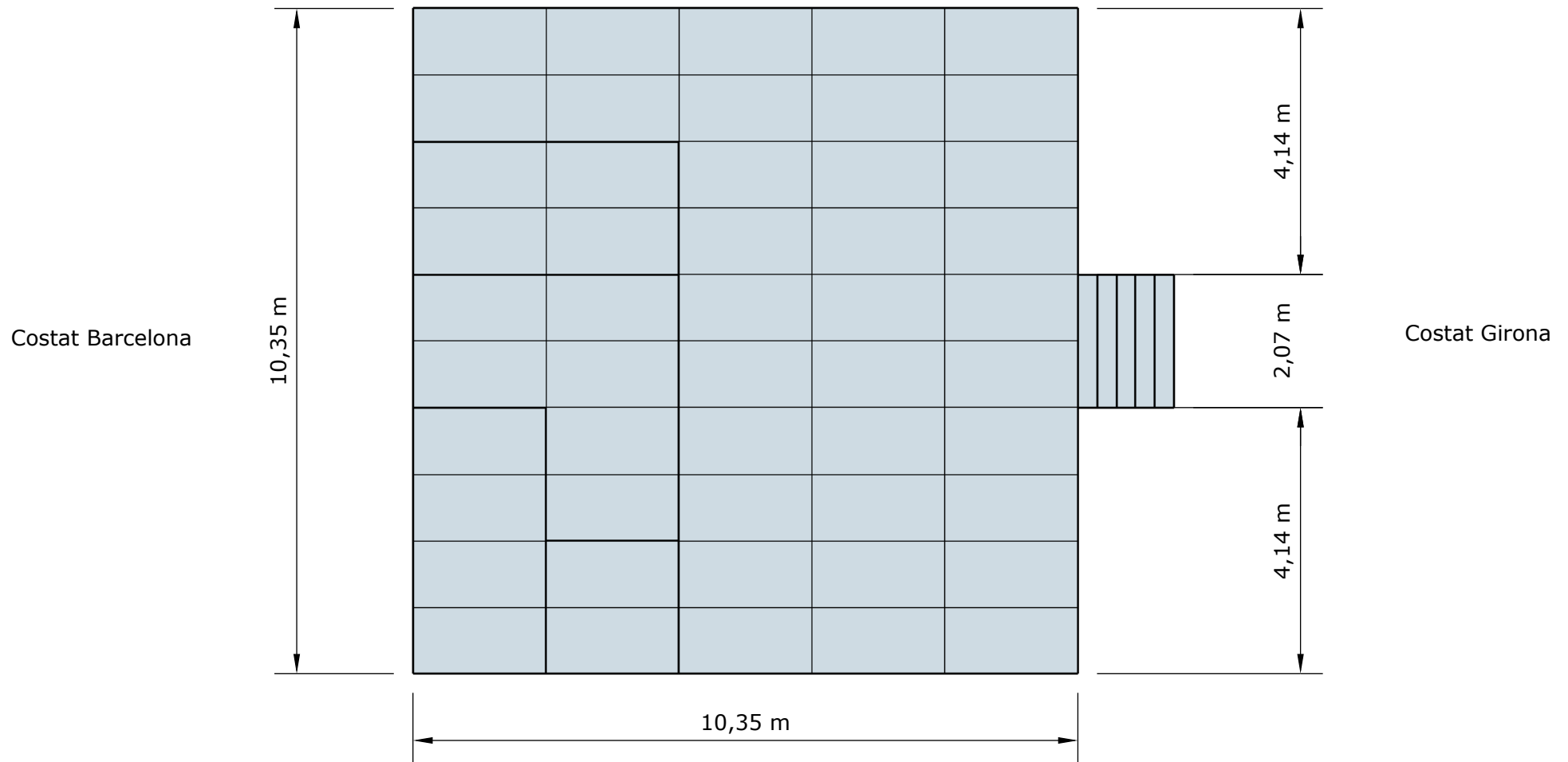
- Detalls de muntatge:
- cal planxar les torres de PA a nivell d'escenari per facilitar el muntatge dels equips de so
 - les taques van als arbotants laterals
 - caldrà tenir en compte la instal·lació de la carpa, la qual cosa pot alterar el planxat de l'arbotant posterior

Linia de final de pàrquing



Nota/ caldrà calçar les potes del Layher amb fustes per compensar el desnivell i evitar l'enfonsament a la sorra





Costat Barcelona

Costat Girona

